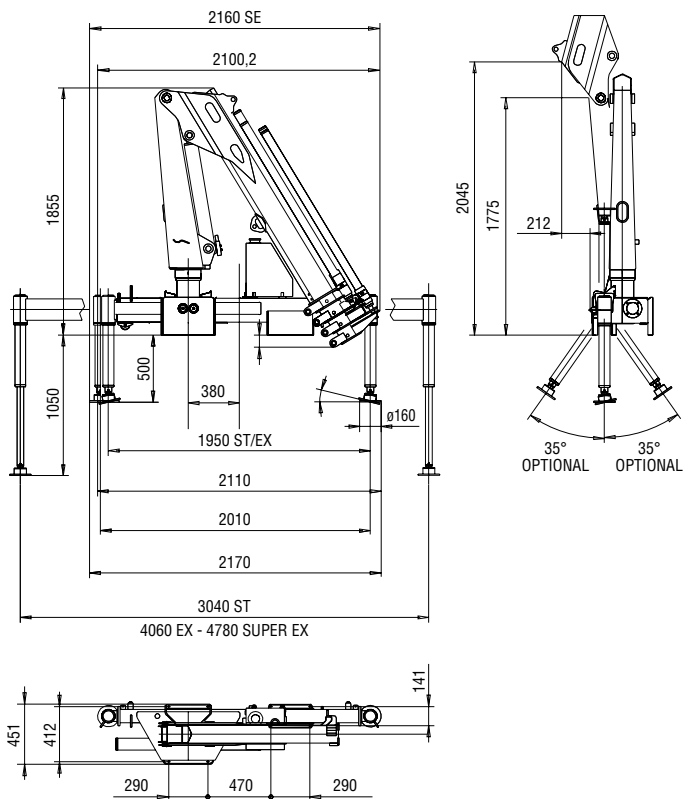


805T
905T



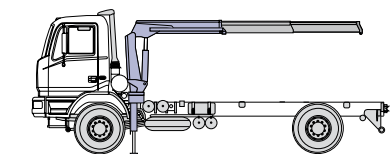
AMCO / VEBA
LIFTING BEYOND HORIZONS

Technical data



Model	kg	m	kg	m	kg	m	kg	m	kg	m				
2S	3850*	1,00	2080	1,85	1190	3,20	830	4,57	585	6,03				
3S	3760*	1,00	1930	1,95	1110	3,30	765	4,67	585	6,03	425	7,50		
4S	3630*	1,00	1770	2,05	1020	3,40	700	4,77	525	6,13	425	7,50	320	8,95

*) theoretical lifting capacity



Recommended truck:
M.T.T. ton 3,5 - G.V.W. ton 3,5



Standard

- Designed in accordance with EN12999+EN13849
- Design class: HC1-HD4
- Load limiting device (CE)
- Hexagonal section extensions
- Independent extension cylinders
- Flanged valve
- Assembly kit
- Oil tank
- Fittings SAE-JIC
- Sliding pads on telescopic extensions
- Self-lubricating bushings
- Fixed stabilizer cylinders
- Light indicator for correct stabilizer stowing (CE)
- Mechanical rotation limitation (CE) (No with HRCS)
- Dual controls (No with radio remote control)
- Proportional pressure transducer on main cylinder (CE)
- Sensor for correct stowing of the crane (CE)
- 90%-100% light visible from all around the crane (CE)
- Proportional inclination sensor on boom (CE)
- A Class - Crane Control System (CE)
- LED panel - Human Machine Interface

	Lifting Moment	Slewing Angle	Working pressure	Oil tank capacity	Oil flow	Max Vertical Reach (Hydr)	Crane weight without stabilizers
	tm	°	bar	l	l/min	m	kg
2S	3,85	380	220	35	16	7,30	690
3S	3,76	380	220	35	16	8,80	735
4S	3,63	380	220	35	16	10,20	775

AMCO VEBA
LIFTING BEYOND HORIZONS

H.C.E. SpA
Via Einstein, 4
42028 Poggio (RE) Italy
Tel. +39 0522 40.80.11
Fax +39 0522 40.80.80
info@amcoveba.it
commerciale@amcoveba.it
www.amcoveba.com



Dealer