

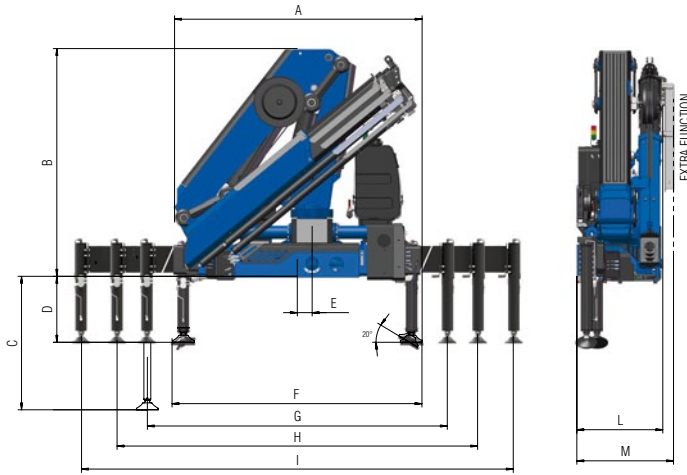
New Generation  
**921NG**  
**C**



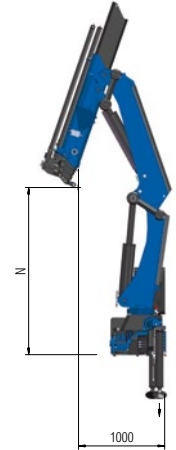
**AMCO**  **VEBA**  
LIFTING BEYOND HORIZONS

# New Generation

## Technical data 921NG C

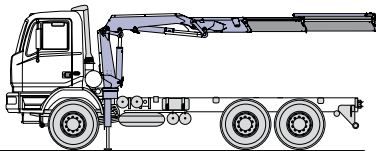


	2S	3S	4S
A	2475	2475	2475
B	2300	2300	2300
C	1348	1348	1348
D	611/666	611/666	611/666
E	150	150	150
F	2520	2520	2520
G	4860	4860	4860
H	5500	5500	5500
I	7420	7420	7420
L	870	870	870
M	990	990	990
N	2770	2682	2594



	2S					3S					4S						
kg	18690	5280	3815	2715		17675	4870	3380	2455	1880		17315	4680	3340	2320	1750	1410
m	1,00*	3,54	4,87	6,82		1,00*	3,63	4,96	6,91	8,96		1,00*	3,70	5,03	6,98	9,03	11,8

\*) theoretical lifting capacity



Recommended truck:  
M.T.T. ton 17 - G.V.W. ton 17

### Standard

- Designed in accordance with EN12999:2020 + EN13849
- Design class: HC1-S2
- Cross controls
- Load limit device
- Flanged valves
- Oil tank
- Manually extendable stabilizers
- Internal stabilizer pipes
- Fixed stabilizer cylinders
- Swivel stabilizer foot
- Centralized greasing system
- Double linkage
- SGS Sprint Generation System
- SDD Soft Descent Drive
- A Class - Crane Control System (CE)
- LED panel - Human Machine Interface

	Lifting Moment	Stewing Angle	Working pressure	Oil tank capacity	Oil flow	Max Vertical Reach (Hydr)	Crane weight without stabilizers
	tm	°	bar	l	l/min	m	kg
2S	18,7	415	300	130	70	10,5	2085
3S	-	415	300	130	70	12,7	2220
4S	-	415	300	130	70	14,8	2340

**AMCO VEBA**  
LIFTING BEYOND HORIZONS

H.C.E. SpA  
Via Einstein, 4  
42028 Poviglio (RE) Italy  
Tel. +39 0522 40.80.11  
Fax +39 0522 40.80.80  
info@amcoveba.it  
commerciale@amcoveba.it  
www.amcoveba.com



ISO 9001 • ISO 14001

Dealer