



# AMCO VEBA

LIFTING BEYOND HORIZONS





# Product Lines



## **800 - 900 Series:**

Rack and pinion articulated cranes

Page 4

## **VR Series:**

Slewing bearing articulated cranes

Page 84

## **100 Series:**

3T articulated cranes

Page 98

## **C Series:**

Compact boom articulated cranes

Page 108

## **600T Series:**

Compact Telescopic cranes

Page 122

## **T Series:**

Telescopic boom cranes

Page 126

## **AERO Series:**

Aereal basket cranes

Page 138

## **PALM Series:**

Specialized cranes for agricultural tractors

Page 142



# 800 - 900 Series

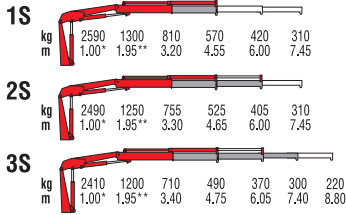
Rack and pinion articulated cranes

803N - 903N	817
804 - 904	817 <b>NG</b>
805 - 905	917 <b>NG</b>
806N - 906N	918 <b>NG</b>
807N - 907N	820
808N - 908N	821 <b>NG</b>
809 <b>NG</b>	921 <b>NG</b>
909 <b>NG</b>	922 <b>NG</b>
810	823
910 <b>NG</b>	824 <b>NG</b>
811 <b>NG</b>	924
911	924 <b>NG</b>
911 <b>NG</b>	825
812	925 <b>NG</b>
912 <b>NG</b>	828
813 <b>NG</b>	929
914 <b>NG</b>	933
815	936
915 <b>NG</b>	946
	950



**803N**

**903N RRS**



\*) Theoretical lifting capacity

\*\*) Fixed hook capacity (only with moment limiter in EC area)

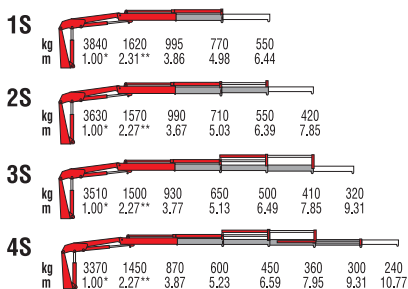
MODELS	LIFTING MOMENT	MAX VERTICAL REACH (HYDR)	WORKING PRESSURE	OIL FLOW	SLEWING ANGLE	WEIGHT	DIMENSIONS WxHxD
	tm	m	bar	l/min	°	kg	mm
1S	2.59	6.98	175	8	370	455	1860x1590x490
2S	-	8.32	175	8	370	490	1920x1590x490
3S	-	9.66	175	8	370	520	2000x1590x490



**804**

**904 RRS**





\*) Theoretical lifting capacity

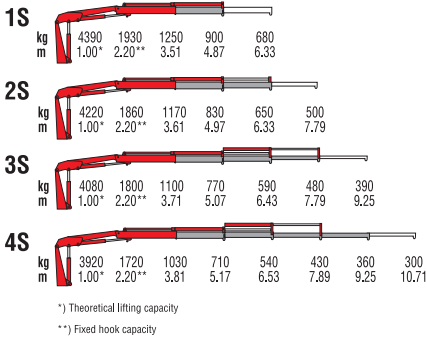
\*\*) Fixed hook capacity (only with moment limiter in EC area)

MODELS	LIFTING MOMENT	MAX VERTICAL REACH (HYDR)	WORKING PRESSURE	OIL FLOW	SLEWING ANGLE	WEIGHT	DIMENSIONS
	tm	m	bar	l/min	°	kg	WxHxD mm
1S	3.84	9.26	235	16	380	710	2100x1845x560
2S	-	10.69	235	16	380	760	2100x1845x560
3S	-	12.06	235	16	380	810	2100x1845x560
4S	-	13.47	235	16	380	855	2115x1845x560



**805**

**905 RRS**



MODELS	LIFTING MOMENT	MAX VERTICAL REACH (HYDR)	WORKING PRESSURE	OIL FLOW	SLEWING ANGLE	WEIGHT	DIMENSIONS
	tm	m	bar	l/min	°	kg	WxHxD mm
1S	4.39	9.25	265	16	380	730	2100x1845x560
2S	-	10.67	265	16	380	780	2100x1845x560
3S	-	12.08	265	16	380	830	2100x1845x560
4S	-	13.49	265	16	380	875	2115x1845x560



**806N**

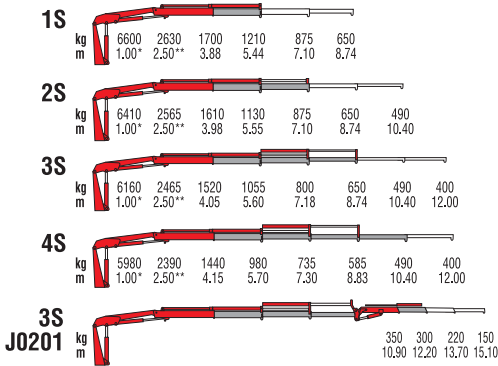
**906N RRS**



Only with  
CE version

# 806N

# 906N RRS



\*) Theoretical lifting capacity

\*\*) Fixed hook capacity

MODELS	LIFTING MOMENT	MAX VERTICAL REACH (HYDR)	WORKING PRESSURE	OIL FLOW	SLEWING ANGLE	WEIGHT	DIMENSIONS
	tm	m	bar	l/min	°	kg	WxHxD
							mm
1S	6.60	8.34	245	20	387	900	2220x1940x600
2S	-	9.81	245	20	387	970	2220x1940x600
3S	-	11.34	245	20	387	1030	2220x1940x600
4S	-	12.90	245	20	387	1080	2250x1940x600
3SJ0201	-	14.68	245	20	387	1210	2250x1940x725



**807N**

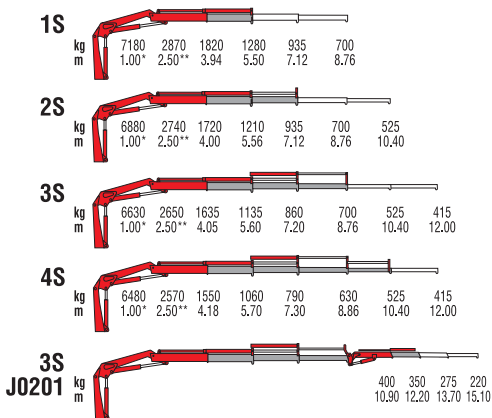
**907N RRS**



Only with  
CE version

# 807N

# 907N RRS



\*) Theoretical lifting capacity  
 \*\*) Fixed hook capacity

MODELS	LIFTING MOMENT	MAX VERTICAL REACH (HYDR)	WORKING PRESSURE	OIL FLOW	SLEWING ANGLE	WEIGHT	DIMENSIONS
	tm	m	bar	l/min	°	kg	WxHxD
1S	7.18	8.50	265	20	387	920	2310x1980x600
2S	-	10.2	265	20	387	1000	2310x1980x600
3S	-	11.7	265	20	387	1060	2310x1980x600
4S	-	13.3	265	20	387	1120	2310x1980x600
3SJ0201	-	15.2	265	20	387	1240	2310x1980x730



**808N**

**908N RRS**

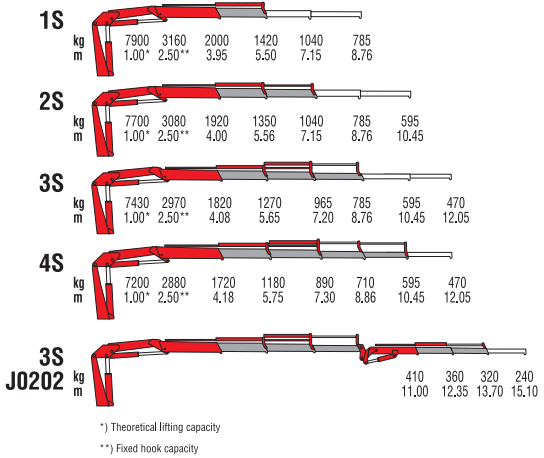


Only with  
CE or Radio  
version



# 808N

# 908N RRS



MODELS	LIFTING MOMENT	MAX VERTICAL REACH (HYDR)	WORKING PRESSURE	OIL FLOW	SLEWING ANGLE	WEIGHT	DIMENSIONS
	tm	m	bar	l/min	°	kg	WxHxD
1S	7.90	8.50	285	20	387	950	2310x1980x600
2S	-	10.2	285	20	387	1030	2310x1980x600
3S	-	11.7	285	20	387	1090	2310x1980x600
4S	-	13.3	285	20	387	1150	2310x1980x600
3SJ0202	-	16.6	285	20	387	1300	2310x1980x730



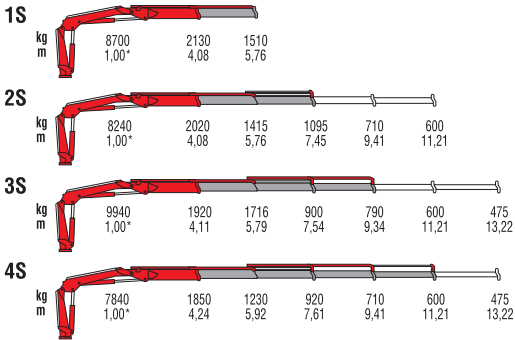
# 809NG



Only with CE or Radio version



Soft Descend Drive

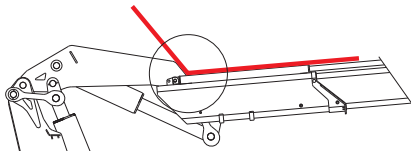


\*) Theoretical lifting capacity

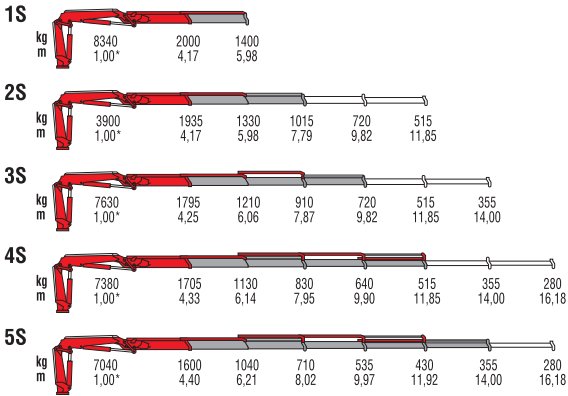
MODELS	LIFTING MOMENT	MAX VERTICAL REACH (HYDR)	WORKING PRESSURE	OIL FLOW	SLEWING ANGLE	WEIGHT	DIMENSIONS WxHxD
	tm	m	bar	l/min	°	kg	mm
1S	8.7	9.1	310	40	425	1140	2305x2070x840
2S	-	10.7	310	40	425	1220	2305x2070x840
3S	-	12.6	310	40	425	1300	2305x2070x840
4S	-	14.4	310	40	425	1370	2305x2070x840



# 909NG



Double linkages, negative angle, working flexibility

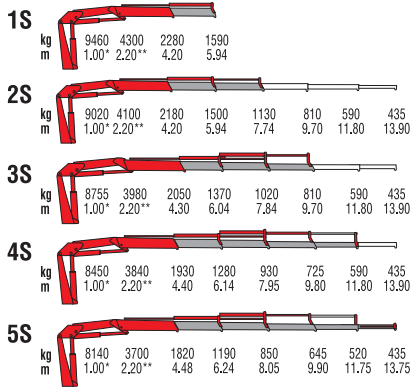


MODELS	LIFTING MOMENT	MAX VERTICAL REACH (HYDR)	WORKING PRESSURE	OIL FLOW	SLEWING ANGLE	WEIGHT	DIMENSIONS WxHxD
	tm	m	bar	l/min	°	kg	mm
1S	8.4	9.3	315	40	425	1215	2290x2085x840
2S	-	10.9	315	40	425	1305	2290x2085x840
3S	-	13.1	315	40	425	1395	2290x2085x840
4S	-	15.1	315	40	425	1480	2290x2085x840
5S	-	17.3	315	40	425	1555	2290x2085x885



# 810 FOR NON-CE MARKET ONLY



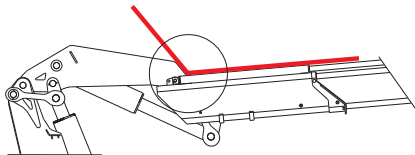


\*) Theoretical lifting capacity  
 \*\*) Fixed hook capacity

MODELS	LIFTING MOMENT	MAX VERTICAL REACH (HYDR)	WORKING PRESSURE	OIL FLOW	SLEWING ANGLE	WEIGHT	DIMENSIONS
	tm	m	bar	l/min	°	kg	WxHxD
1S	9.46	9.45	290	25	395	1230	2480x2170x640
2S	-	11.30	290	25	395	1335	2480x2170x640
3S	-	13.20	290	25	395	1430	2480x2170x640
4S	-	15.30	290	25	395	1520	2480x2170x640
5S	-	17.30	290	25	395	1590	2480x2170x750

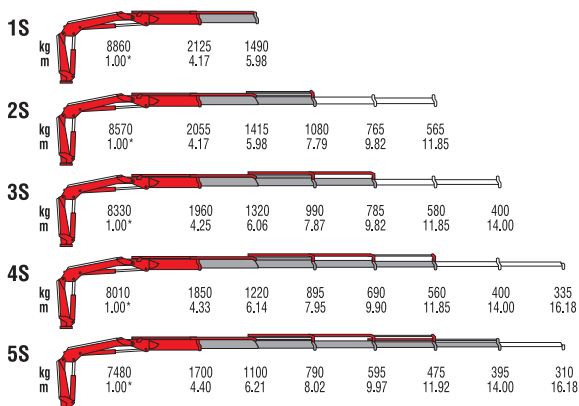


# 910NG



Double linkages, negative angle, working flexibility





MODELS	LIFTING MOMENT	MAX VERTICAL REACH (HYDR)	WORKING PRESSURE	OIL FLOW	SLEWING ANGLE	WEIGHT	DIMENSIONS WxHxD
	tm	m	bar	l/min	°	kg	mm
1S	8.9	9.3	335	40	425	1215	2290x2085x840
2S	-	10.9	335	40	425	1305	2290x2085x840
3S	-	13.1	335	40	425	1395	2290x2085x840
4S	-	15.1	330	40	425	1480	2290x2085x840
5S	-	17.3	327	40	425	1555	2290x2085x885



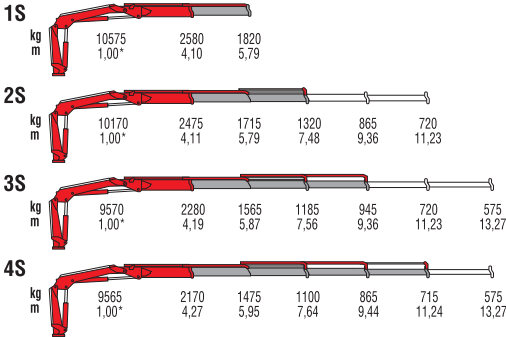
# 811 NG



Only with CE or Radio version



Soft Descend Drive



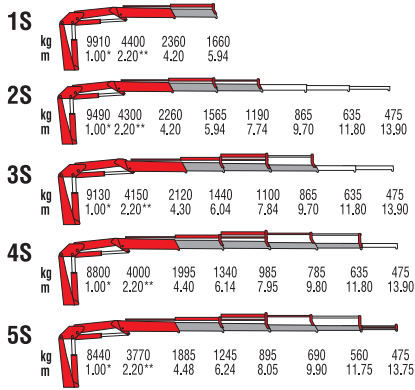
\*) Theoretical lifting capacity

MODELS	LIFTING MOMENT	MAX VERTICAL REACH (HYDR)	WORKING PRESSURE	OIL FLOW	SLEWING ANGLE	WEIGHT	DIMENSIONS WxHxD
	tm	m	bar	l/min	°	kg	mm
1S	10.5	9.2	310	40	425	1240	2310x2100x840
2S	-	10.8	310	40	425	1340	2310x2100x840
3S	-	12.6	310	40	425	1430	2310x2100x840
4S	-	14.4	310	40	425	1520	2310x2100x840



**911** FOR NON-CE MARKET ONLY





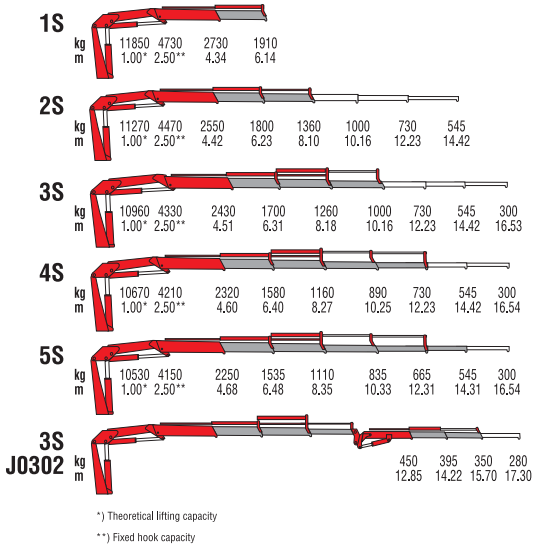
\*) Theoretical lifting capacity  
 \*\*) Fixed hook capacity

MODELS	LIFTING MOMENT	MAX VERTICAL REACH (HYDR)	WORKING PRESSURE	OIL FLOW	SLEWING ANGLE	WEIGHT	DIMENSIONS
	tm	m	bar	l/min	°	kg	WxHxD
1S	9.91	5.94	300	25	395	1240	2480x2170x640
2S	-	7.74	300	25	395	1345	2480x2170x640
3S	-	9.70	300	25	395	1440	2480x2170x640
4S	-	11.80	300	25	395	1530	2480x2170x640
5S	-	13.75	300	25	395	1600	2480x2170x750



# 812 FOR NON-CE MARKET ONLY

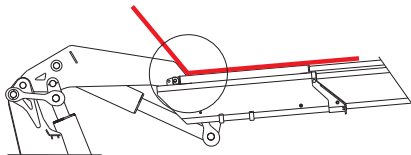




MODELS	LIFTING MOMENT	MAX VERTICAL REACH (HYDR)	WORKING PRESSURE	OIL FLOW	SLEWING ANGLE	WEIGHT	DIMENSIONS
	tm	m	bar	l/min	°	kg	WxHxD
							mm
1S	11.8	9.6	310	25	380	1545	2460x2340x885
2S	-	11.5	310	25	380	1665	2460x2340x885
3S	-	13.5	310	25	380	1770	2470x2340x885
4S	-	15.5	310	25	380	1865	2485x2340x885
5S	-	17.6	310	25	380	1955	2500x2340x940
3SJ0302	-	18.8	290	25	380	2080	2490x2340x1030

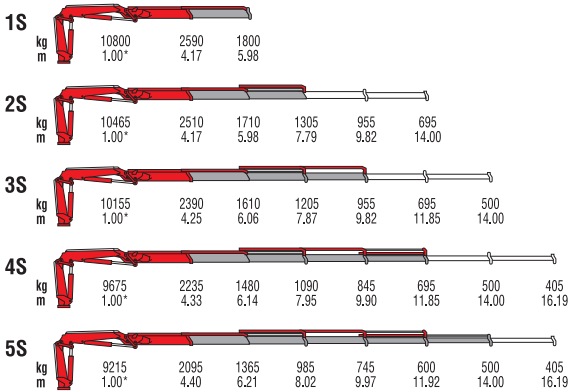


# 912NG



Double linkages, negative angle, working flexibility





\*) Theoretical lifting capacity

MODELS	LIFTING MOMENT	MAX VERTICAL REACH (HYDR)	WORKING PRESSURE	OIL FLOW	SLEWING ANGLE	WEIGHT	DIMENSIONS
	tm	m	bar	l/min	°	kg	WxHxD mm
1S	10.8	9.5	335	40	425	1315	2305x2110x840
2S	-	11.3	335	40	425	1425	2305x2110x840
3S	-	13.3	335	40	425	1530	2305x2110x840
4S	-	15.4	330	40	425	1625	2305x2110x840
5S	-	17.5	330	40	425	1715	2305x2110x885



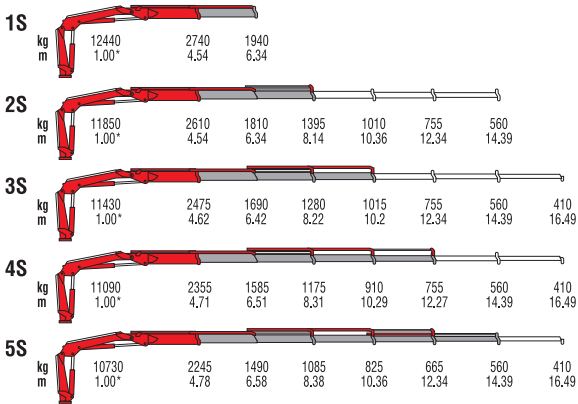
# 813NG



Only with CE or Radio version



Soft Descend Drive



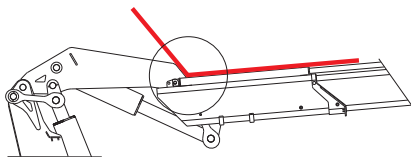
\*) Theoretical lifting capacity

MODELS	LIFTING MOMENT	MAX VERTICAL REACH (HYDR)	WORKING PRESSURE	OIL FLOW	SLEWING ANGLE	WEIGHT	DIMENSIONS
	tm	m	bar	l/min	°	kg	WxHxD
1S	12.4	9.9	285	60	425	1545	2480x2295x825
2S	-	11.7	285	60	425	1665	2480x2295x825
3S	-	13.7	285	60	425	1780	2480x2295x825
4S	-	15.7	285	60	425	1870	2480x2295x825
5S	-	17.8	285	60	425	1955	2480x2295x895

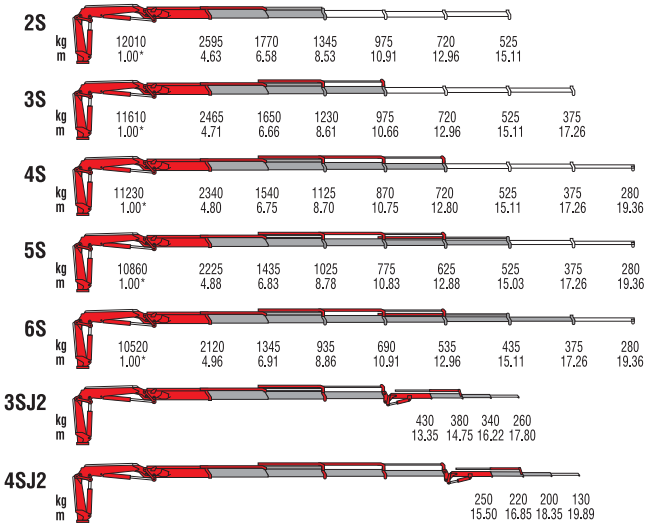


# 914NG

**ENG**  
ELECTRONIC  
BLACK BOX  
Only with CE or Radio version



Double linkages, negative angle, working flexibility



\*) Theoretical lifting capacity

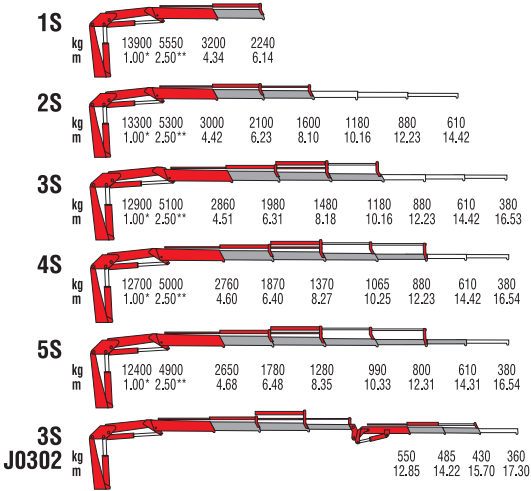
MODELS	LIFTING MOMENT	MAX VERTICAL REACH (HYDR)	WORKING PRESSURE	OIL FLOW	SLEWING ANGLE	WEIGHT	DIMENSIONS
	tm	m	bar	l/min	°	kg	WxHxD
							mm
2S	12.0	12.2	290	60	425	1820	2450x2330x825
3S	-	14.4	290	60	425	1935	2450x2330x825
4S	-	16.5	290	60	425	2040	2450x2330x825
5S	-	18.8	290	60	425	2140	2450x2330x895
6S	-	21.0	290	60	425	2230	2450x2330x895
3SJ2	-	19.8	290	60	425	2275	2450x2450x940
4SJ2	-	22.0	290	60	425	2395	2450x2500x940



# 815

FOR NON-CE MARKET ONLY





\*) Theoretical lifting capacity

\*\*) Fixed hook capacity

MODELS	LIFTING MOMENT	MAX VERTICAL REACH (HYDR)	WORKING PRESSURE	OIL FLOW	SLEWING ANGLE	WEIGHT	DIMENSIONS
	tm	m	bar	l/min	°	kg	WxHxD
1S	13.9	9.6	290	25	380	1680	2460x2340x885
2S	-	11.5	290	25	380	1810	2460x2340x885
3S	-	13.5	290	25	380	1930	2460x2340x885
4S	-	15.5	290	25	380	2030	2485x2340x885
5S	-	17.6	290	25	380	2120	2500x2340x940
3SJ0302	-	18.8	270	25	380	2240	2490x2340x1030



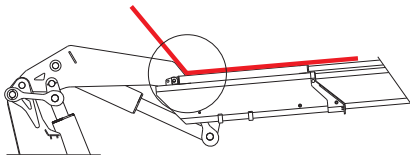
# 915NG



Only with CE or Radio version

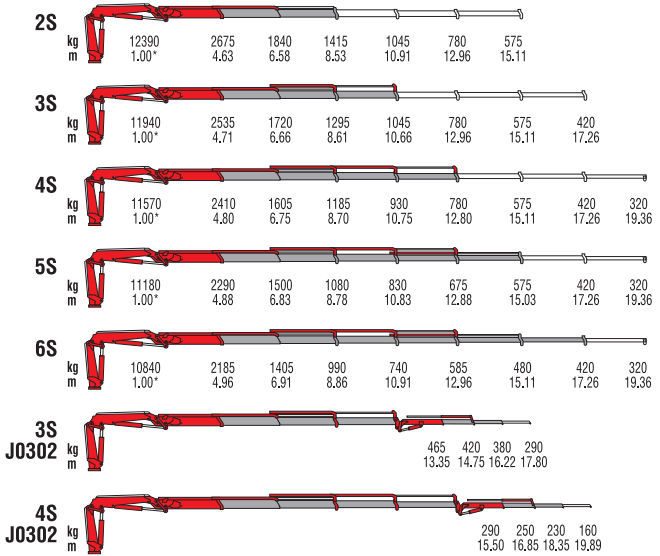


Soft Descend Drive



Double linkages, negative angle, working flexibility





MODELS	LIFTING MOMENT tm	MAX VERTICAL REACH (HYDR) m	WORKING PRESSURE bar	OIL FLOW l/min	SLEWING ANGLE °	WEIGHT kg	DIMENSIONS WxHxD mm
2S	12.4	12.2	305	60	425	1820	2450x2330x825
3S	-	14.4	305	60	425	1935	2450x2330x825
4S	-	16.5	305	60	425	2040	2450x2330x825
5S	-	18.8	305	60	425	2140	2450x2330x895
6S	-	21.0	305	60	425	2230	2450x2330x895
3SJ0302	-	19.8	305	60	425	2275	2450x2450x940
4SJ0302	-	22.0	305	60	425	2395	2450x2500x940



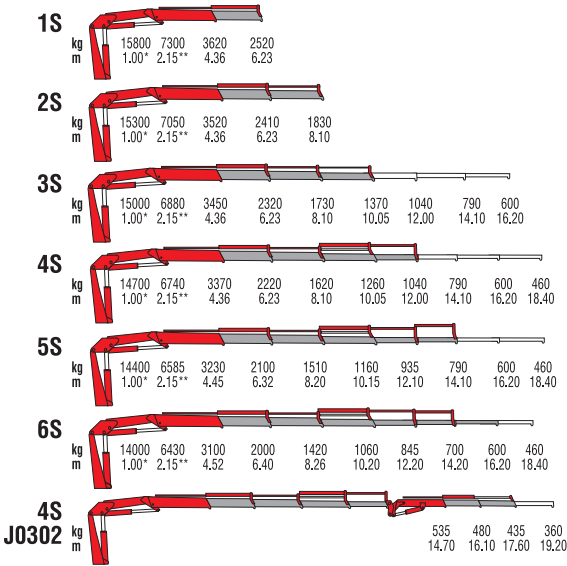
# 817 FOR NON-CE MARKET ONLY



Only with  
Radio  
version



Soft Descend Drive



\*) Theoretical lifting capacity

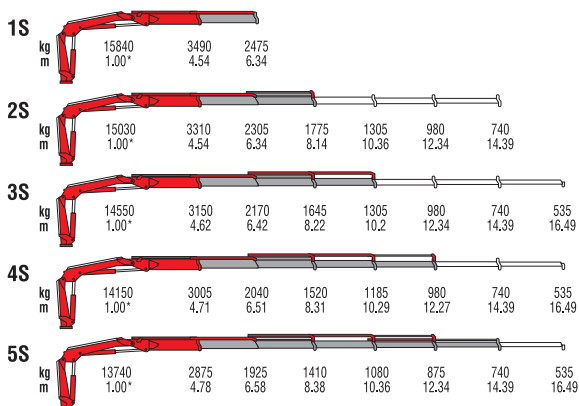
\*\*) Fixed hook capacity

MODELS	LIFTING MOMENT	MAX VERTICAL REACH (HYDR)	WORKING PRESSURE	OIL FLOW	SLEWING ANGLE	WEIGHT	DIMENSIONS
	tm	m	bar	l/min	°	kg	WxHxD
							mm
1S	15.8	9.9	310	32	387	2130	2480x2295x970
2S	-	11.8	310	32	387	2270	2480x2295x970
3S	-	13.8	310	32	387	2390	2480x2295x1000
4S	-	15.7	310	32	387	2510	2480x2295x1000
5S	-	17.8	310	32	387	2620	2480x2295x1000
6S	-	19.8	310	32	387	2700	2495x2295x1000
4SJ0302	-	21.2	310	32	387	2820	2480x2295x1120



# 817 NG





\*) Theoretical lifting capacity

MODELS	LIFTING MOMENT	MAX VERTICAL REACH (HYDR)	WORKING PRESSURE	OIL FLOW	SLEWING ANGLE	WEIGHT	DIMENSIONS
	tm	m	bar	l/min	°	kg	WxHxD
							mm
1S	15.8	9.9	280	60	425	1775	2490x2295x825
2S	-	11.7	280	60	425	1910	2490x2295x825
3S	-	13.7	280	60	425	2025	2490x2295x825
4S	-	15.7	280	60	425	2130	2490x2295x825
5S	-	17.8	280	60	425	2220	2490x2295x905

# New Generation



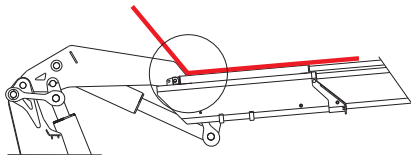
## 917NG



Only with CE or Radio version



Soft Descend Drive



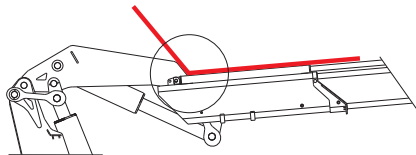
Double linkages, negative angle, working flexibility





# 918NG

**EB NG**  
ELECTRONIC  
BLACK BOX  
Only with CE or Radio version



Double linkages, negative angle, working flexibility





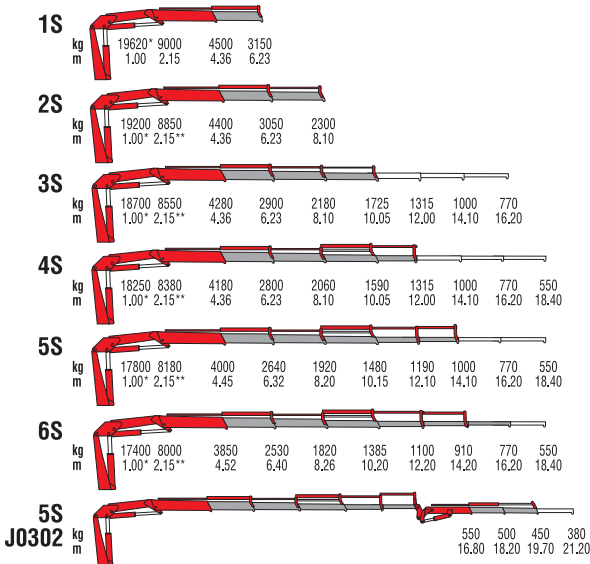
\*) Theoretical lifting capacity

MODELS	LIFTING MOMENT	MAX VERTICAL REACH (HYDR)	WORKING PRESSURE	OIL FLOW	SLEWING ANGLE	WEIGHT	DIMENSIONS
	tm	m	bar	l/min	°	kg	WxHxD
							mm
2S	15.7	12.2	310	60	425	1995	2475x2330x825
3S	-	14.4	310	60	425	2125	2475x2330x825
4S	-	16.5	310	60	425	2245	2475x2330x825
5S	-	18.8	310	60	425	2355	2475x2330x905
6S	-	21.0	310	60	425	2450	2475x2330x905
3SJ0503	-	21.9	330	60	425	2615	2475x2615x957



# 820 FOR NON-CE MARKET ONLY





\*) Theoretical lifting capacity

\*\*) Fixed hook capacity

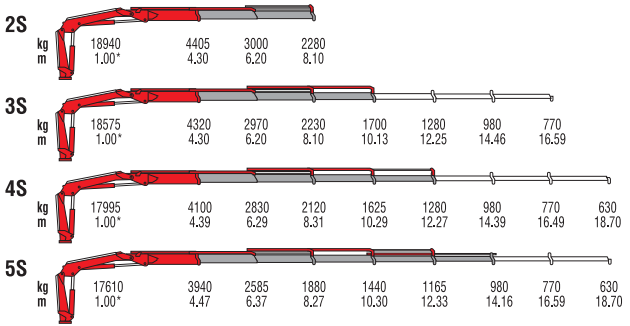
MODELS	LIFTING MOMENT	MAX VERTICAL REACH (HYDR)	WORKING PRESSURE	OIL FLOW	SLEWING ANGLE	WEIGHT	DIMENSIONS
	tm	m	bar	l/min	°	kg	WxHxD
							mm
1S	19.6	9.9	300	40	387	2280	2480x2295x970
2S	-	11.8	300	40	387	2430	2480x2295x970
3S	-	13.8	300	40	387	2570	2480x2295x1000
4S	-	15.7	300	40	387	2700	2480x2295x1000
5S	-	17.8	300	40	387	2800	2480x2295x1000
6S	-	19.8	300	40	387	2900	2495x2295x1000
5SJ0302	-	23.3	300	40	387	3135	2480x2300x1120



# 821 NG



**Soft Descend Drive**

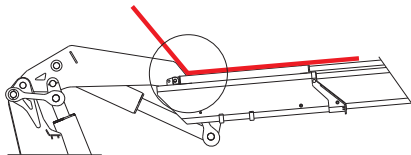


\*) Theoretical lifting capacity

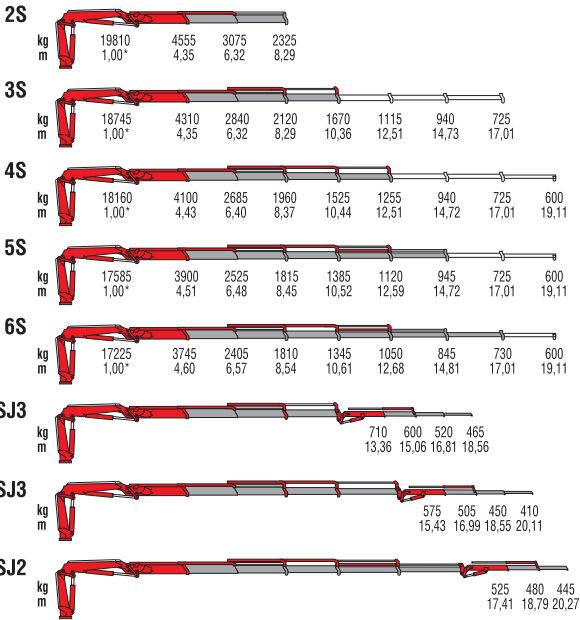
MODELS	LIFTING MOMENT	MAX VERTICAL REACH (HYDR)	WORKING PRESSURE	OIL FLOW	SLEWING ANGLE	WEIGHT	DIMENSIONS
	tm	m	bar	l/min	°	kg	WxHxD
							mm
2S	18.9	11.9	315	70	415	2305	2520x2300x930
3S	-	13.9	315	70	415	2455	2520x2300x930
4S	-	16.1	315	70	415	2600	2520x2300x930
5S	-	18.2	315	70	415	2715	2520x2300x930



# 921 NG



Double linkages, negative angle, working flexibility

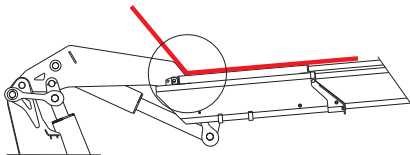


\*) Theoretical lifting capacity

MODELS	LIFTING MOMENT	MAX VERTICAL REACH (HYDR)	WORKING PRESSURE	OIL FLOW	SLEWING ANGLE	WEIGHT	DIMENSIONS WxHxD
	tm	m	bar	l/min	°	kg	mm
2S	19.8	12.0	320	70	415	2475	2520x2300x930
3S	-	14.1	310	70	415	2625	2520x2300x930
4S	-	16.2	310	70	415	2775	2520x2300x930
5S	-	18.4	310	70	415	2895	2520x2300x930
6S	-	20.7	310	70	415	2990	2520x2300x930
3SJ3	-	22.2	-	70	415	3285	2520x2695x1050
4SJ3	-	23.8	-	70	415	3265	2520x2600x1050
5SJ2	-	23.9	-	70	415	3170	2520x2550x1050

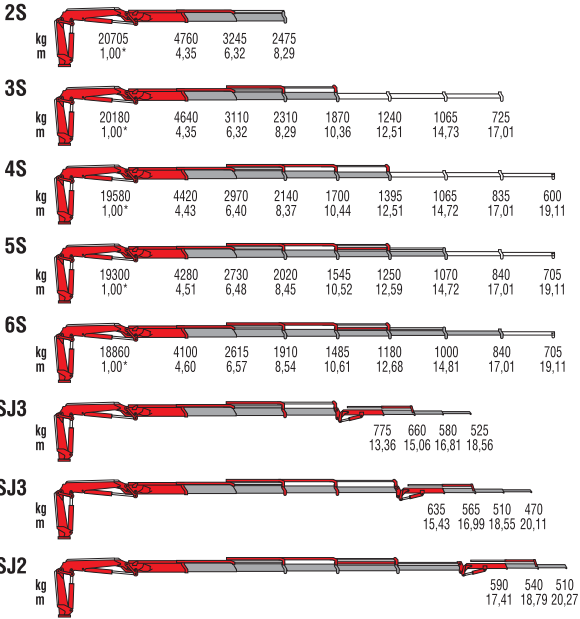


# 922 NG



Double linkages, negative angle, working flexibility





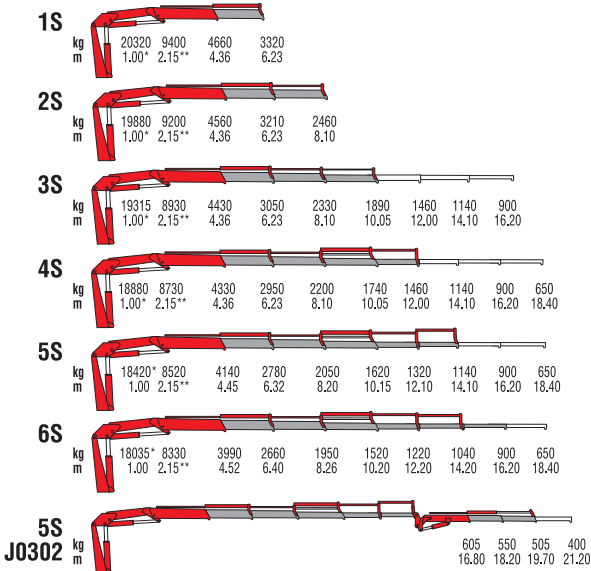
\*) Theoretical lifting capacity

MODELS	LIFTING MOMENT	MAX VERTICAL REACH (HYDR)	WORKING PRESSURE	OIL FLOW	SLEWING ANGLE	WEIGHT	DIMENSIONS
	tm	m	bar	l/min	°	kg	WxHxD
							mm
2S	20.7	12.0	335	70	415	2475	2520x2300x930
3S	-	14.1	335	70	415	2625	2520x2300x930
4S	-	16.2	335	70	415	2775	2520x2300x930
5S	-	18.4	335	70	415	2895	2520x2300x930
6S	-	20.7	335	70	415	2990	2520x2300x930
3SJ3	-	22.2	-	70	415	3285	2520x2695x1050
4SJ3	-	23.8	-	70	415	3265	2520x2600x1050
5SJ3	-	23.9	-	70	415	3170	2520x2550x1050



# 823 FOR NON-CE MARKET ONLY





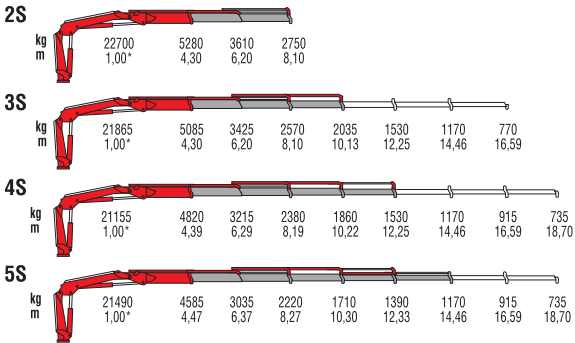
\*) Theoretical lifting capacity  
 \*\*) Fixed hook capacity

MODELS	LIFTING MOMENT	MAX VERTICAL REACH (HYDR)	WORKING PRESSURE	OIL FLOW	SLEWING ANGLE	WEIGHT	DIMENSIONS
	tm	m	bar	l/min	°	kg	WxHxD mm
1S	20.7	9.9	315	40	387	2310	2480x2295x970
2S	-	11.8	315	40	387	2460	2480x2295x970
3S	-	13.8	315	40	387	2600	2480x2295x1000
4S	-	15.7	315	40	387	2730	2480x2295x1000
5S	-	17.8	315	40	387	2830	2480x2295x1000
6S	-	19.8	315	40	387	2930	2495x2295x1000
5SJ0302	-	23.3	315	40	387	3165	2480x2300x1120



# 824NG





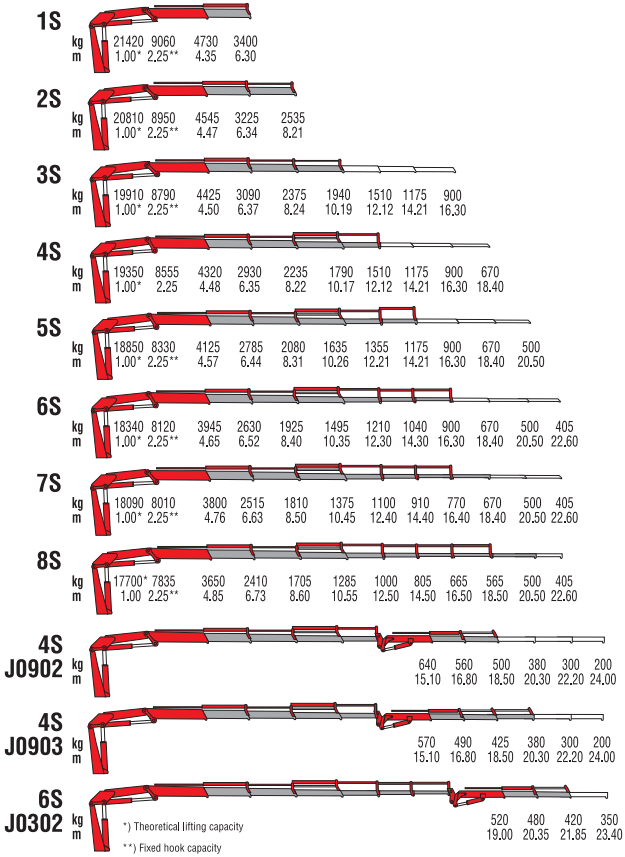
\*) Theoretical lifting capacity

MODELS	LIFTING MOMENT	MAX VERTICAL REACH (HYDR)	WORKING PRESSURE	OIL FLOW	SLEWING ANGLE	WEIGHT	DIMENSIONS WxHxD
	tm	m	bar	l/min	°	kg	mm
2S	18.9	11.9	320	80	415	2485	2520x2300x930
3S	-	13.9	320	80	415	2640	2520x2300x930
4S	-	16.0	320	80	415	2790	2520x2300x930
5S	-	18.2	320	80	415	2910	2520x2300x930



# 924 FOR NON-CE MARKET ONLY





MODELS	LIFTING MOMENT	MAX VERTICAL REACH (HYDR)	WORKING PRESSURE	OIL FLOW	SLEWING ANGLE	WEIGHT	DIMENSIONS
	tm	m	bar	l/min	°	kg	WxHxD
							mm
1S	21,4	9,9	325	38	387	2570	2480x2330x1005
2S	-	11,8	325	38	387	2720	2480x2330x1016
3S	-	13,8	325	38	387	2870	2480x2330x1016
4S	-	15,7	325	38	387	3010	2480x2330x1016
5S	-	17,8	325	38	387	3130	2480x2330x1016
6S	-	19,9	325	38	387	3250	2480x2330x1016
7S	-	22,0	325	38	387	3350	2480x2330x1095
8S	-	24,1	325	38	387	3450	2480x2330x1095
4SJ0902	-	22,1	325	38	387	3520	2480x2615x1140
4SJ0903	-	23,9	325	38	387	3610	2480x2615x1140
6SJ0302	-	25,4	325	38	387	3550	2480x2495x1140



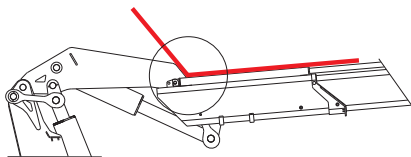
# 924 NG



Only with CE or Radio version

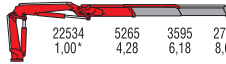
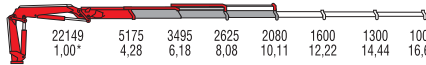
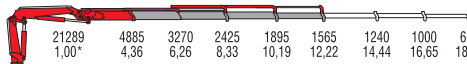
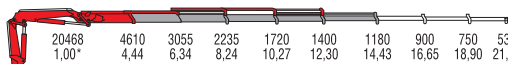
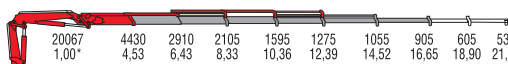
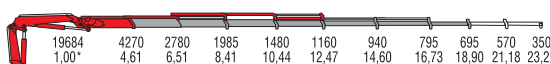
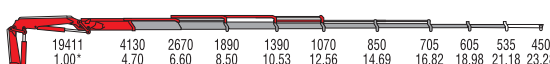
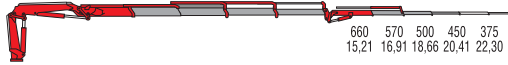
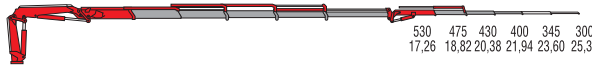
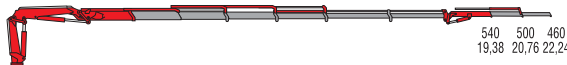


Soft Descend Drive



Double linkages, negative angle, working flexibility



<b>2S</b>		22534 1,00*	5265 4,28	3595 6,18	2730 8,08											
<b>3S</b>		22149 1,00*	5175 4,28	3495 6,18	2625 8,08	2080 10,11	1600 12,22	1300 14,44	1000 16,65							
<b>4S</b>		21289 1,00*	4885 4,36	3270 6,26	2425 8,33	1895 10,19	1565 12,22	1240 14,44	1000 16,65	605 18,90						
<b>5S</b>		20468 1,00*	4610 4,44	3055 6,34	2235 8,24	1720 10,27	1400 12,30	1180 14,43	900 16,65	750 18,90	535 21,18					
<b>6S</b>		20067 1,00*	4430 4,53	2910 6,43	2105 8,33	1595 10,36	1275 12,39	1055 14,52	905 16,65	605 18,90	535 21,18					
<b>7S</b>		19684 1,00*	4270 4,61	2780 6,51	1985 8,41	1480 10,44	1160 12,47	940 14,60	795 16,73	695 18,90	570 21,18	350 23,28				
<b>8S</b>		19411 1,00*	4130 4,70	2670 6,60	1890 8,50	1390 10,53	1070 12,56	850 14,69	705 16,82	605 18,98	535 21,18	450 23,28				
<b>4SJ3</b>										660 15,21	570 16,91	500 18,66	450 20,41	375 22,30	315 24,21	
<b>5SJ3</b>											530 17,26	475 18,82	430 20,38	400 21,94	345 23,60	300 25,38
<b>6SJ2</b>												540 19,38	500 20,76	460 22,24		

\*) Theoretical lifting capacity

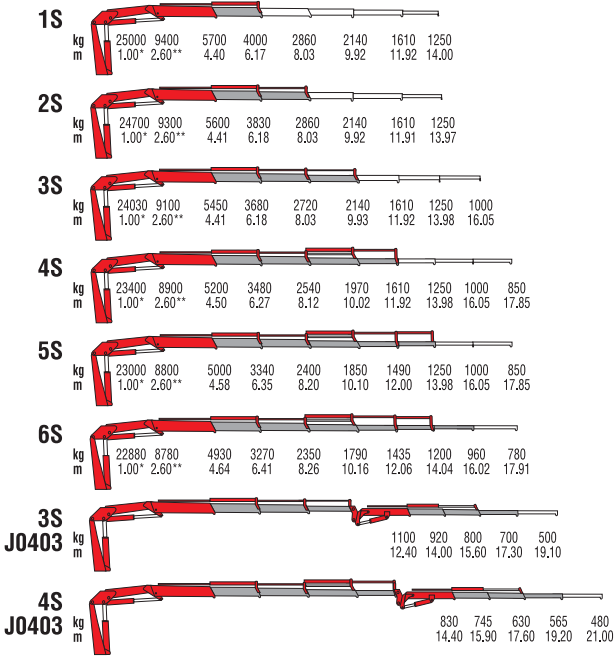
MODELS	LIFTING MOMENT	MAX VERTICAL REACH (HYDR)	WORKING PRESSURE	OIL FLOW	SLEWING ANGLE	WEIGHT	DIMENSIONS
	tm	m	bar	l/min	°	kg	WxHxD
2S	22.5	11.7	315	80	415	2600	2520x2300x935
3S	-	13.8	310	80	415	2740	2520x2300x935
4S	-	15.9	310	80	415	2880	2520x2300x935
5S	-	18.1	310	80	415	3005	2520x2300x935
6S	-	20.3	310	80	415	3110	2520x2300x935
7S	-	22.5	310	80	415	3230	2520x2300x1005
8S	-	24.8	310	80	415	3320	2520x2300x1005
4SJ3	-	24.1	325	80	415	3540	2520x2715x1055
5SJ3	-	25.6	330	80	415	3495	2520x2615x1055
6SJ3	-	25.9	325	80	415	3385	2520x2605x1055



# 825



Only with  
CE or Radio  
version



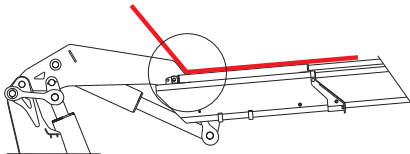
\*) Theoretical lifting capacity

\*\*) Fixed hook capacity

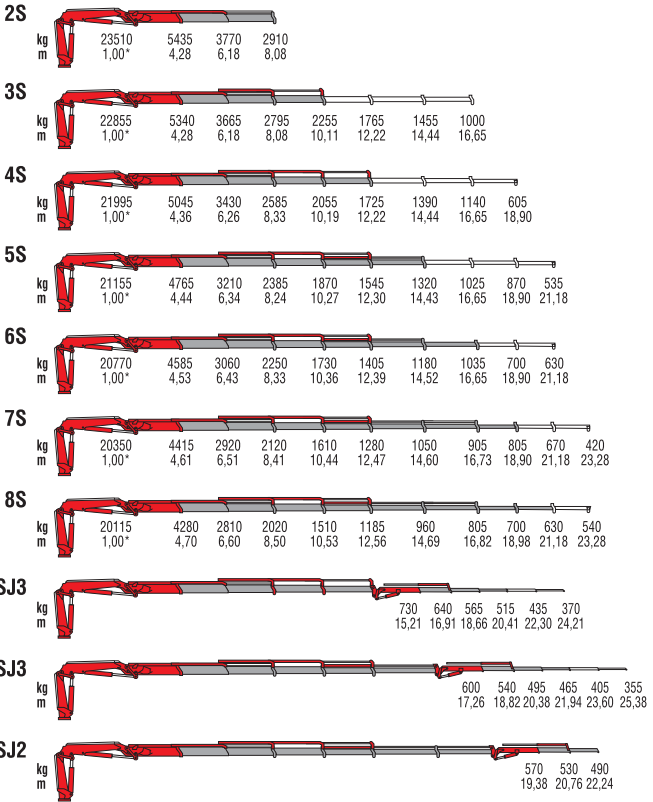
MODELS	LIFTING MOMENT	MAX VERTICAL REACH (HYDR)	WORKING PRESSURE	OIL FLOW	SLEWING ANGLE	WEIGHT	DIMENSIONS
	tm	m	bar	l/min	°	kg	WxHxD
							mm
1S	25.1	9.8	290	50	400	3020	2540x2320x1115
2S	-	11.6	290	50	400	3200	2540x2320x1115
3S	-	13.4	290	50	400	3340	2540x2320x1115
4S	-	15.3	290	50	400	3500	2540x2320x1115
5S	-	17.3	290	50	400	3640	2540x2320x1115
6S	-	19.3	290	50	400	3735	2540x2320x1200
3SJ0403	-	20.2	290	50	400	3890	2540x2430x1300
4SJ0403	-	22.1	295	50	400	4040	2540x2445x1300



# 925 NG



Double linkages, negative angle, working flexibility



\*) Theoretical lifting capacity

MODELS	LIFTING MOMENT	MAX VERTICAL REACH (HYDR)	WORKING PRESSURE	OIL FLOW	SLEWING ANGLE	WEIGHT	DIMENSIONS
	tm	m	bar	l/min	°	kg	mm
2S	23,3	11,7	330	80	415	2600	2520x2300x935
3S	-	13,8	330	80	415	2740	2520x2300x935
4S	-	15,9	330	80	415	2880	2520x2300x935
5S	-	18,1	330	80	415	3005	2520x2300x935
6S	-	20,3	330	80	415	3110	2520x2300x935
7S	-	22,5	330	80	415	3230	2520x2300x1005
8S	-	24,8	330	80	415	3320	2520x2300x1005
4SJ3	-	24,1	335	80	415	3540	2520x2715x1055
5SJ3	-	25,6	335	80	415	3495	2520x2615x1055
6SJ2	-	25,9	330	80	415	3385	2520x2605x1055

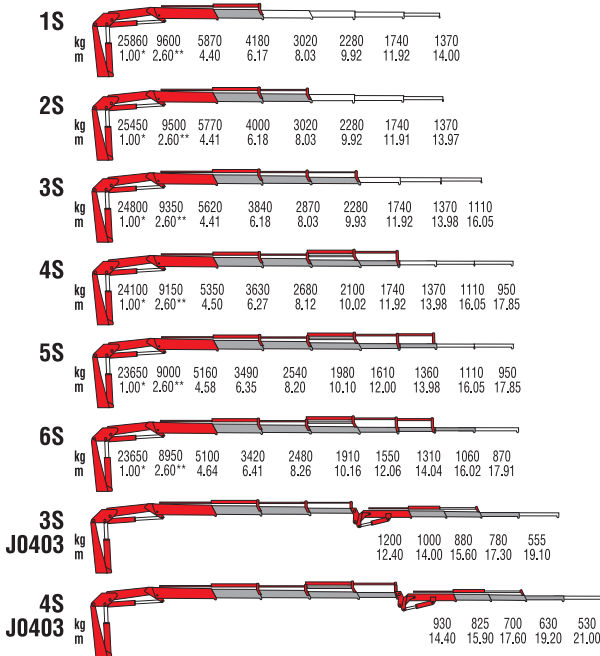


# 828



Only with  
CE or Radio  
version





\*) Theoretical lifting capacity

\*\*) Fixed hook capacity

MODELS	LIFTING MOMENT	MAX VERTICAL REACH (HYDR)	WORKING PRESSURE	OIL FLOW	SLEWING ANGLE	WEIGHT	DIMENSIONS WxHxD
	tm	m	bar	l/min	°	kg	mm
1S	25.8	9.8	305	50	400	3070	2540x2320x1115
2S	-	11.6	305	50	400	3250	2540x2320x1115
3S	-	13.4	305	50	400	3390	2540x2320x1115
4S	-	15.3	305	50	400	3550	2540x2320x1115
5S	-	17.3	305	50	400	3690	2540x2320x1115
6S	-	19.3	305	50	400	3785	2540x2320x1115
3SJ0403	-	20.2	295	50	400	3940	2540x2430x1300
4SJ0403	-	22.1	295	50	400	4090	2540x2445x1300



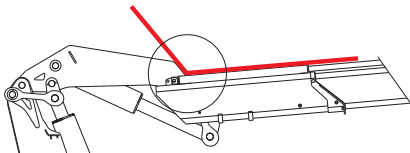
# 929



Only with  
CE or Radio  
version

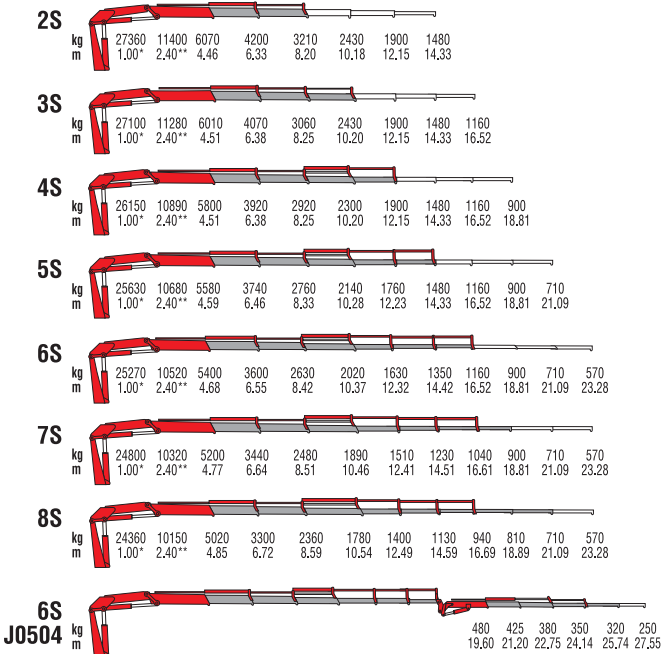


Soft Descend Drive



Double linkages, negative angle, working flexibility





\*) Theoretical lifting capacity

\*\*) Fixed hook capacity

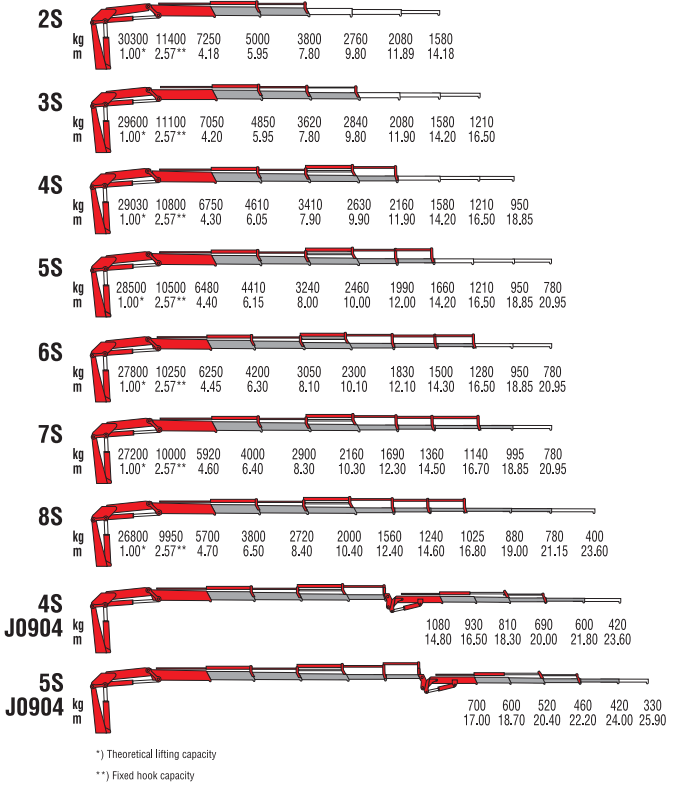
MODELS	LIFTING MOMENT	MAX VERTICAL REACH (HYDR)	WORKING PRESSURE	OIL FLOW	SLEWING ANGLE	WEIGHT	DIMENSIONS
	tm	m	bar	l/min	°	kg	WxHxD mm
2S	27.3	11.9	325	80	425	3105	2510x2350x1010
3S	-	13.8	325	80	425	3265	2510x2350x1010
4S	-	15.8	325	80	425	3420	2510x2350x1010
5S	-	17.9	325	80	425	3560	2510x2350x1040
6S	-	20.1	325	80	425	3685	2510x2350x1060
7S	-	22.4	325	80	425	3800	2510x2350x1160
8S	-	24.7	325	80	425	3900	2510x2350x1180
6SJ0504	-	29.1	325	80	425	4260	2510x2705x1190



# 933



Soft Descend Drive



MODELS	LIFTING MOMENT	MAX VERTICAL REACH (HYDR)	WORKING PRESSURE	OIL FLOW	SLEWING ANGLE	WEIGHT	DIMENSIONS
	tm	m	bar	l/min	°	kg	WxHxD
2S	30.3	11.8	305	45	397	3820	2540x2355x1170
3S	-	13.8	305	45	397	4040	2540x2355x1170
4S	-	15.8	305	45	397	4270	2540x2355x1170
5S	-	18.1	305	45	397	4440	2540x2355x1170
6S	-	20.4	305	45	397	4600	2540x2405x1170
7S	-	22.7	305	45	397	4720	2540x2490x1300
8S	-	25.0	305	45	397	4840	2540x2550x1300
4SJ0904	-	25.7	290	45	397	5110	2540x2620x1330
5SJ0904	-	28.0	295	45	397	5280	2545x2620x1330



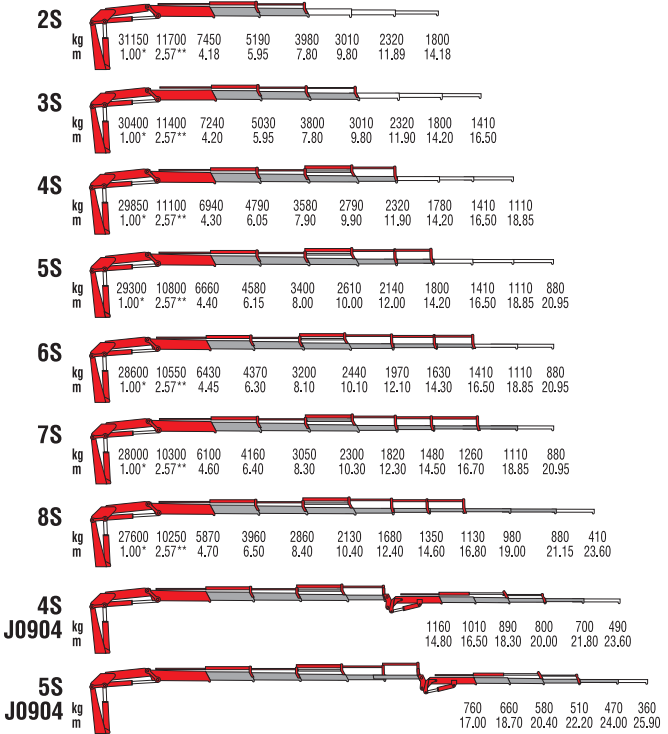
# 936



Only with  
CE or Radio  
version



Soft Descend Drive



\*) Theoretical lifting capacity  
 \*\*) Fixed hook capacity

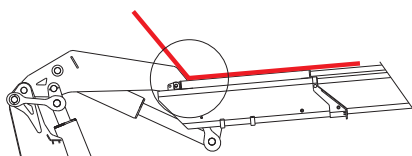
MODELS	LIFTING MOMENT	MAX VERTICAL REACH (HYDR)	WORKING PRESSURE	OIL FLOW	SLEWING ANGLE	WEIGHT	DIMENSIONS
	tm	m	bar	l/min	°	kg	WxHxD
2S	31.1	11.8	315	45	397	3820	2540x2355x1170
3S	-	13.8	315	45	397	4040	2540x2355x1170
4S	-	15.8	315	45	397	4270	2540x2355x1170
5S	-	18.1	315	45	397	4440	2540x2355x1170
6S	-	20.4	315	45	397	4600	2540x2405x1170
7S	-	22.7	315	45	397	4720	2540x2490x1300
8S	-	25.0	315	45	397	4840	2540x2550x1300
4SJ0904	-	25.7	300	45	397	5110	2540x2620x1330
5SJ0904	-	28.0	310	45	397	5280	2545x2620x1330



# 946 *Basic*

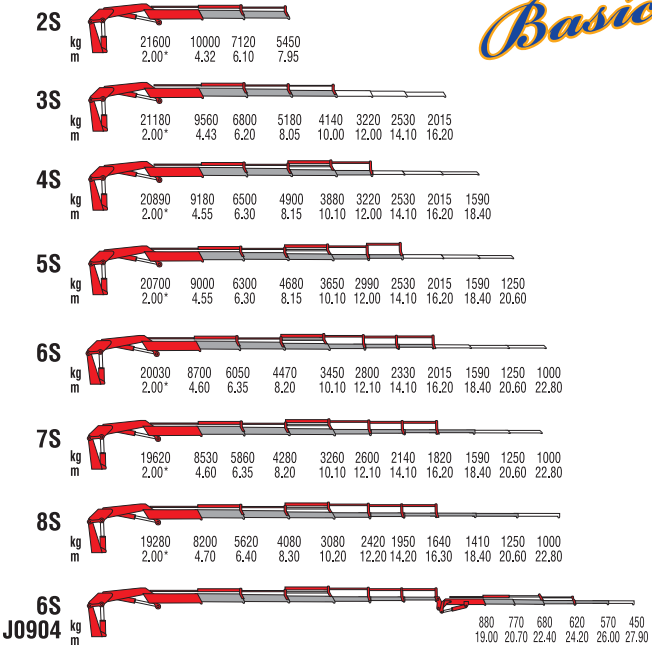


Soft Descent Drive



Double linkages, negative angle, working flexibility

# 946 Basic

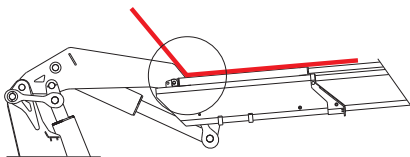


\*) Theoretical lifting capacity

MODELS	LIFTING MOMENT	MAX VERTICAL REACH (HYDR)	WORKING PRESSURE	OIL FLOW	SLEWING ANGLE	WEIGHT	DIMENSIONS WxHxD
	tm	m	bar	l/min	°	kg	mm
2S	43.2	12.0	305	50	400	4540	2128x2460x1275
3S	-	14.1	305	50	400	4790	2210x2460x1275
4S	-	16.1	305	50	400	5070	2315x2460x1275
5S	-	18.2	305	50	400	5310	2372x2460x1285
6S	-	20.3	305	50	400	5510	2455x2460x1285
7S	-	22.5	305	50	400	5700	2464x2460x1400
8S	-	24.7	305	50	400	5880	2590x2480x1400
6SJ0904	-	30.1	305	50	400	6380	2515x2725x1470



# 946



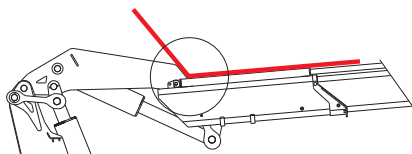
Double linkages, negative angle, working flexibility



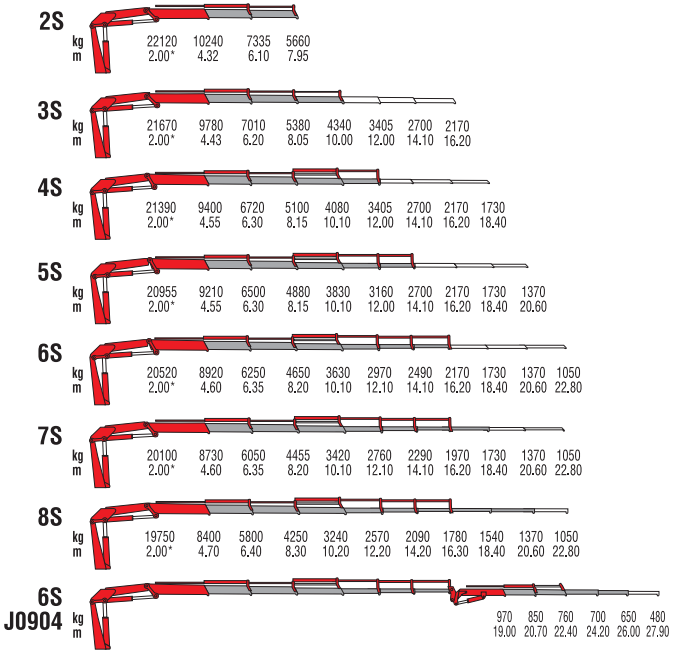




# 950



Double linkages, negative angle, working flexibility



\*) Theoretical lifting capacity

MODELS	LIFTING MOMENT	MAX VERTICAL REACH (HYDR)	WORKING PRESSURE	OIL FLOW	SLEWING ANGLE	WEIGHT	DIMENSIONS
	tm	m	bar	l/min	°	kg	WxHxD
2S	44.2	12.0	320	80	400	4580	2505x2460x1275
3S	-	14.1	320	80	400	4830	2505x2460x1275
4S	-	16.1	320	80	400	5110	2505x2460x1275
5S	-	18.2	320	80	400	5350	2505x2460x1285
6S	-	20.3	320	80	400	5550	2505x2460x1285
7S	-	22.5	320	80	400	5740	2505x2460x1400
8S	-	24.7	320	80	400	5920	2510x2480x1400
6SJ0904	-	30.1	320	80	400	6420	2515x2725x1470





# VR Series

Slewing bearing articulated cranes

**VR23NG**

**VR26NG**

**VR60NG**

**VR66NG**

**VR75**

**VR85**



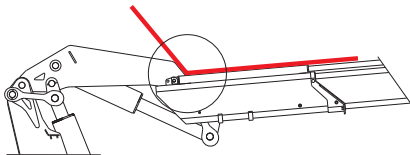
# VR23NG



Only with CE or Radio version

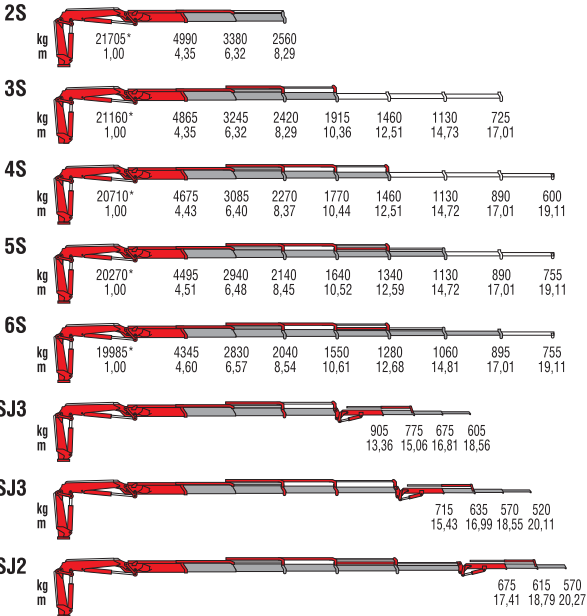


Soft Descend Drive



Double linkages, negative angle, working flexibility

# VR23NG



\*) Theoretical lifting capacity

MODELS	LIFTING MOMENT	MAX VERTICAL REACH (HYDR)	WORKING PRESSURE	OIL FLOW	SLEWING ANGLE	WEIGHT	DIMENSIONS
	tm	m	bar	l/min	°	kg	WxHxD
2S	21.7	12.0	345	70	Endless	2740	2535x2335x960
3S	-	14.1	345	70	Endless	2890	2535x2335x960
4S	-	16.2	345	70	Endless	3040	2535x2335x960
5S	-	18.4	345	70	Endless	3160	2535x2335x960
6S	-	20.7	345	70	Endless	3255	2535x2335x960
3SJ3	-	22.2	-	70	Endless	3550	2550x2685x1095
4SJ3	-	23.8	-	70	Endless	3530	2550x2590x1095
5SJ2	-	23.9	-	70	Endless	3435	2540x2530x1095



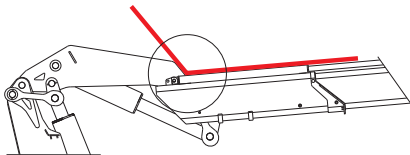
# VR26NG



Only with CE or Radio version



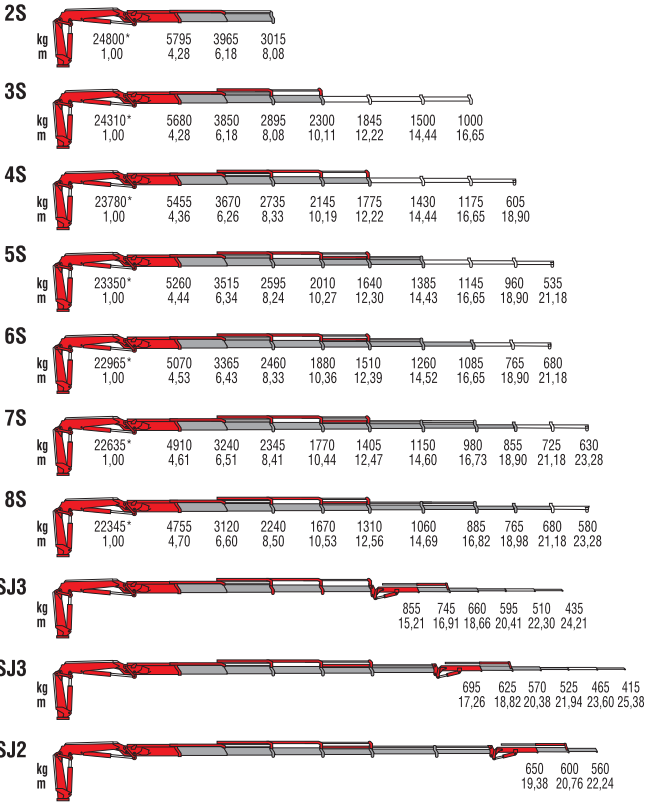
Soft Descend Drive



Double linkages, negative angle, working flexibility



# VR26NG

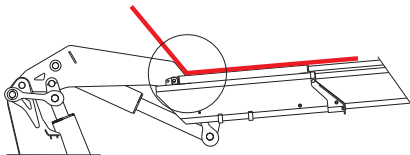


\*) Theoretical lifting capacity

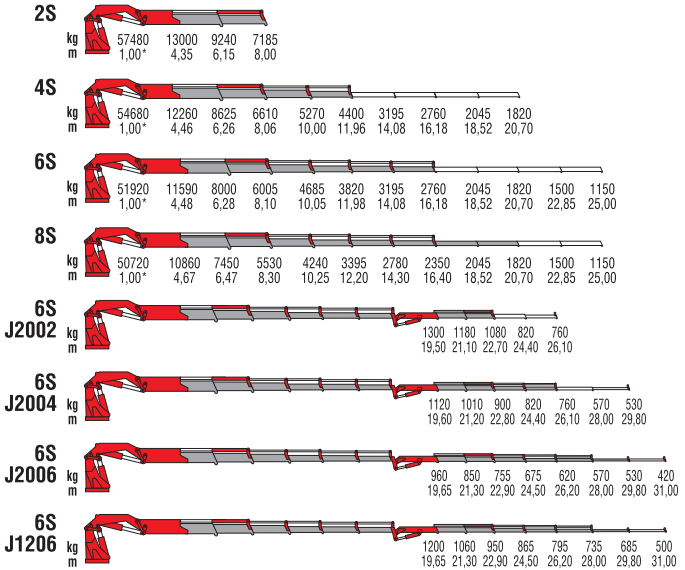
MODELS	LIFTING MOMENT	MAX VERTICAL REACH (HYDR)	WORKING PRESSURE	OIL FLOW	SLEWING ANGLE	WEIGHT	DIMENSIONS
	tm	m	bar	l/min	°	kg	WxHxD
2S	24.8	11.7	345	80	Endless	2815	2530x2335x980
3S	-	13.8	345	80	Endless	2955	2530x2335x980
4S	-	15.9	345	80	Endless	3095	2530x2335x980
5S	-	18.1	345	80	Endless	3220	2530x2335x980
6S	-	20.3	345	80	Endless	3325	2530x2335x980
7S	-	22.5	345	80	Endless	3445	2530x2335x1055
8S	-	24.8	345	80	Endless	3535	2530x2335x1055
4SJ3	-	24.1	355	80	Endless	3755	2550x2700x1100
5SJ3	-	25.6	350	80	Endless	3710	2550x2595x1100
6SJ2	-	25.9	350	80	Endless	3600	2540x2580x1100



# VR60NG



Double linkages, negative angle, working flexibility

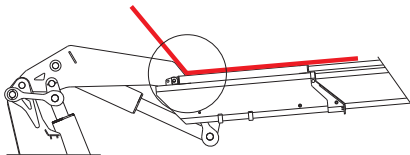


\*) Theoretical lifting capacity

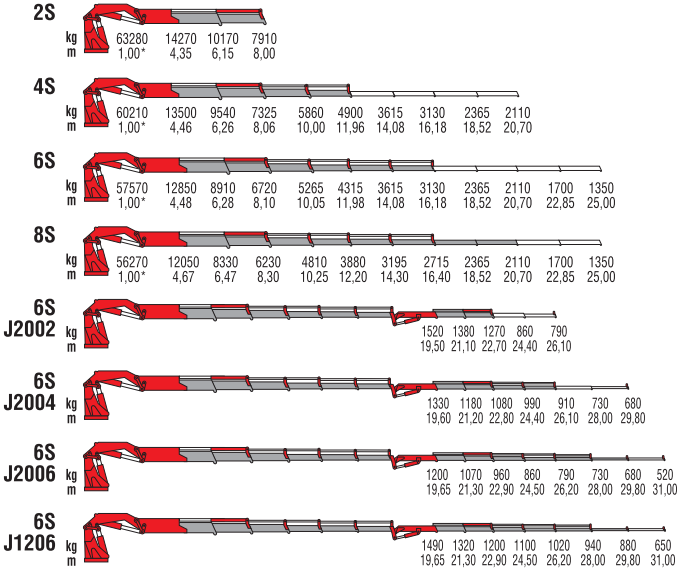
MODELS	LIFTING MOMENT tm	MAX VERTICAL REACH (HYDR) m	WORKING PRESSURE bar	OIL FLOW l/min	SLEWING ANGLE °	WEIGHT kg	DIMENSIONS WxHxD mm
2S	57.5	11.9	335	100	Endless	5430	2530x2430x1480
4S	-	15.9	335	100	Endless	6010	2530x2430x1480
6S	-	20.3	335	100	Endless	6550	2530x2430x1480
8S	-	24.7	335	100	Endless	6980	2550x2430x1635
6S J2002	-	26.6	-	100	Endless	7750	2550x2740x1665
6S J2004	-	30.1	-	100	Endless	7655	2550x2740x1665
6S J2006	-	33.8	-	100	Endless	7875	2550x2740x1665
6S J1206	-	33.8	-	100	Endless	8050	2550x2780x1665



# VR66NG



Double linkages, negative angle, working flexibility



\*) Theoretical lifting capacity

MODELS	LIFTING MOMENT	MAX VERTICAL REACH (HYDR)	WORKING PRESSURE	OIL FLOW	SLEWING ANGLE	WEIGHT	DIMENSIONS WxHxD
	tm	m	bar	l/min	°	kg	mm
2S	63.2	11.9	335	100	Endless	5430	2530x2430x1480
4S	-	15.9	335	100	Endless	6010	2530x2430x1480
6S	-	20.3	335	100	Endless	6550	2530x2430x1480
8S	-	24.7	335	100	Endless	6980	2550x2430x1635
6S J2002	-	26.6	-	100	Endless	7750	2550x2740x1665
6S J2004	-	30.1	-	100	Endless	7655	2550x2740x1665
6S J2006	-	33.8	-	100	Endless	7875	2550x2740x1665
6S J1206	-	33.8	-	100	Endless	8050	2550x2780x1665

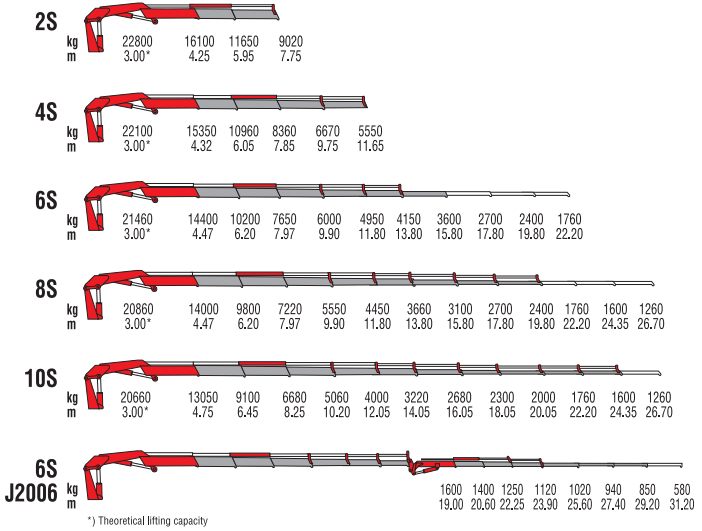


# VR75

FOR NON-CE MARKET ONLY



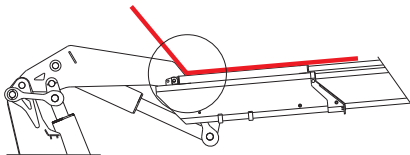
Soft Descend Drive



MODELS	LIFTING MOMENT	MAX VERTICAL REACH (HYDR)	WORKING PRESSURE	OIL FLOW	SLEWING ANGLE	WEIGHT	DIMENSIONS WxHxD
	tm	m	bar	l/min	°	kg	mm
2S	69.9	12.1	295	80	Endless	7450	2530x2450x1950
4S	-	16.0	295	80	Endless	8100	2530x2450x1950
6S	-	20.2	295	80	Endless	8700	2530x2450x2110
8S	-	24.1	295	80	Endless	9250	2530x2505x2135
10S	-	28.7	295	80	Endless	9650	2530x2635x2135
6SJ2006	-	33.6	295	80	Endless	10200	2530x2800x2240



# VR85



Double linkages, negative angle, working flexibility







## 3Technology System Design

- 1 In-line second boom
- 2 High elevation angle
- 3 Smaller installation space required
- 4 Modular frame (103-105)  
(ease of installation)
- 5 Reduced repair cost
- 6 Steel Made in Finland





# 100 Series

3T articulated cranes

**103**

**105**

**108**

**111**

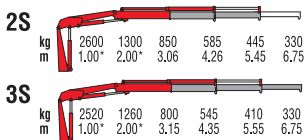
**115**

**120**

**123**



# 103

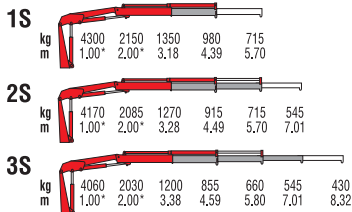


\*) Theoretical lifting capacity

MODELS	LIFTING MOMENT	MAX VERTICAL REACH (HYDR)	WORKING PRESSURE	OIL FLOW	SLEWING ANGLE	WEIGHT	DIMENSIONS WxHxD
	tm	m	bar	l/min	°	kg	mm
2S	2.60	7.93	205	10	370	435	1900x1635x352
3S	-	9.19	205	10	370	465	1900x1635x352



# 105

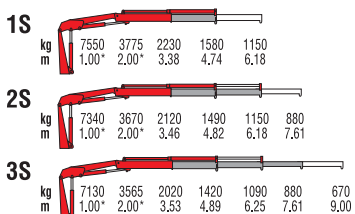


\*) Theoretical lifting capacity

MODELS	LIFTING MOMENT	MAX VERTICAL REACH (HYDR)	WORKING PRESSURE	OIL FLOW	SLEWING ANGLE	WEIGHT	DIMENSIONS
	tm	m	bar	l/min	°	kg	WxHxD mm
1S	4.30	7.22	270	14	380	630	2155x1955x420
2S	-	8.51	270	14	380	680	2155x1955x420
3S	-	9.81	270	14	380	725	2155x1955x420



# 108

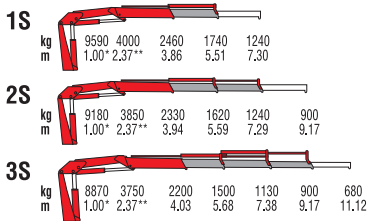


\*) Theoretical lifting capacity

MODELS	LIFTING MOMENT	MAX VERTICAL REACH (HYDR)	WORKING PRESSURE	OIL FLOW	SLEWING ANGLE	WEIGHT	DIMENSIONS
	tm	m	bar	l/min	°	kg	WxHxD
1S	7.55	7.81	255	16	380	845	2320x2030x565
2S	-	9.22	255	16	380	905	2320x2030x565
3S	-	10.64	255	16	380	965	2320x2030x565



# 111



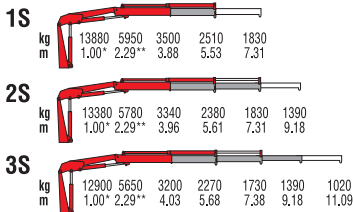
\*) Theoretical lifting capacity

\*\*) Fixed hook capacity

MODELS	LIFTING MOMENT	MAX VERTICAL REACH (HYDR)	WORKING PRESSURE	OIL FLOW	SLEWING ANGLE	WEIGHT	DIMENSIONS
	tm	m	bar	l/min	°	kg	mm
1S	9.56	9.30	275	25	380	1150	2490x2320x635
2S	-	11.08	275	25	380	1250	2490x2320x635
3S	-	12.95	275	25	380	1340	2490x2320x690



# 115



\*) Theoretical lifting capacity

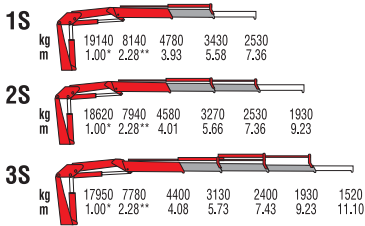
\*\*) Fixed hook capacity

MODELS	LIFTING MOMENT	MAX VERTICAL REACH (HYDR)	WORKING PRESSURE	OIL FLOW	SLEWING ANGLE	WEIGHT	DIMENSIONS
	tm	m	bar	l/min	°	kg	WxHxD
1S	13.9	9.54	285	25	380	1610	2500x2455x820
2S	-	11.3	285	25	380	1725	2500x2455x820
3S	-	13.1	285	25	380	1830	2500x2455x820





# 120



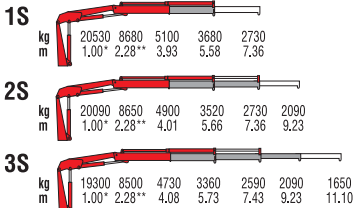
\*) Theoretical lifting capacity

\*\*) Fixed hook capacity

MODELS	LIFTING MOMENT	MAX VERTICAL REACH (HYDR)	WORKING PRESSURE	OIL FLOW	SLEWING ANGLE	WEIGHT	DIMENSIONS
	tm	m	bar	l/min	°	kg	mm
1S	19.1	9.35	295	40	380	2005	2500x2475x920
2S	-	11.0	295	40	380	2140	2500x2475x920
3S	-	12.8	295	40	380	2265	2500x2475x920



# 123

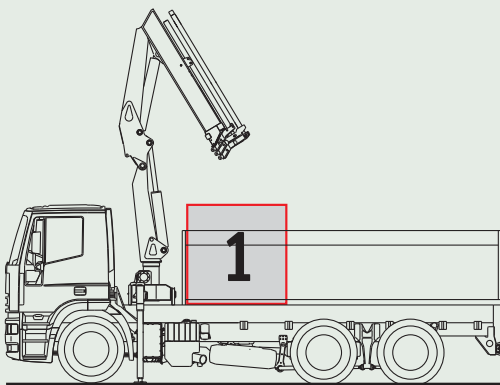


\*) Theoretical lifting capacity

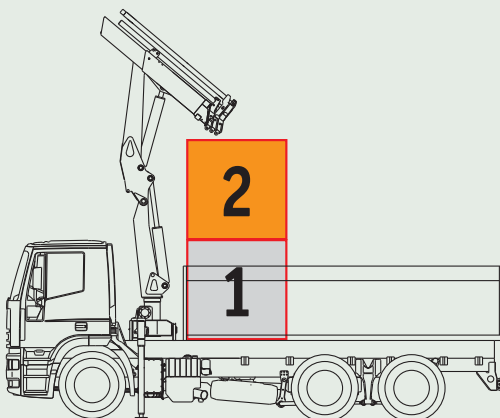
\*\*) Fixed hook capacity

MODELS	LIFTING MOMENT	MAX VERTICAL REACH (HYDR)	WORKING PRESSURE	OIL FLOW	SLEWING ANGLE	WEIGHT	DIMENSIONS
	tm	m	bar	l/min	°	kg	WxHxD
1S	20.5	9.35	315	40	380	2035	2500x2475x945
2S	-	11.05	315	40	380	2170	2500x2475x945
3S	-	12.84	315	40	380	2295	2500x2475x945





# Standard



# C Series



# C Series

Compact boom articulated cranes

810C

911C

911**NG** C

814C

914**NG** C

817C

917**NG** C

921**NG** C

924C

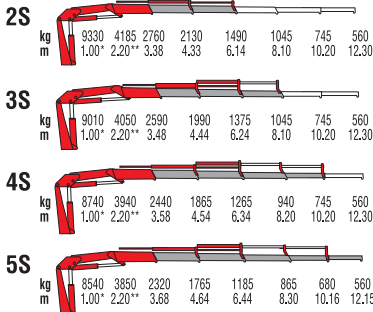
924**NG** C

933C

936C



# 810C FOR NON-CE MARKET ONLY



\*) Theoretical lifting capacity

\*\*) Fixed hook capacity

MODELS	LIFTING MOMENT	MAX VERTICAL REACH (HYDR)	WORKING PRESSURE	OIL FLOW	SLEWING ANGLE	WEIGHT	DIMENSIONS
	tm	m	bar	l/min	°	kg	WxHxD
2S	9.33	9.7	290	25	395	1300	2480x2170x640
3S	-	11.6	290	25	395	1395	2480x2170x640
4S	-	13.7	290	25	395	1485	2480x2170x640
5S	-	15.6	290	25	395	1555	2480x2170x750



FOR NON-CE MARKET ONLY **911C**



Model	kg	9600	4280	2840	2205	1560	1110	800	610
2S	m	1.00*	2.20**	3.38	4.33	6.14	8.10	10.20	12.30
3S	kg	9260	4120	2660	2060	1440	1110	800	610
3S	m	1.00*	2.20**	3.48	4.44	6.24	8.10	10.20	12.30
4S	kg	8970	4010	2505	1930	1320	1000	800	610
4S	m	1.00*	2.20**	3.58	4.54	6.34	8.20	10.20	12.30
5S	kg	8760	3920	2380	1830	1240	920	730	610
5S	m	1.00*	2.20**	3.68	4.64	6.44	8.30	10.16	12.15

\*) Theoretical lifting capacity

\*\*\*) Fixed hook capacity

MODELS	LIFTING MOMENT	MAX VERTICAL REACH (HYDR)	WORKING PRESSURE	OIL FLOW	SLEWING ANGLE	WEIGHT	DIMENSIONS
	tm	m	bar	l/min	°	kg	WxHxD
							mm
2S	9.60	9.7	290	25	395	1310	2480x2170x640
3S	-	11.6	290	25	395	1405	2480x2170x640
4S	-	13.7	290	25	395	1495	2480x2170x640
5S	-	15.6	290	25	395	1565	2480x2170x750



## 911 NGC

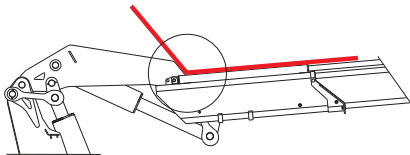


	2S	3S	4S	5S	6S
kg	9590	2665	1875	1370	
m	1.00*	3.60	5.04	6.85	

	2S	3S	4S	5S	6S
kg	9285	2530	1760	1265	975
m	1.00*	3.67	5.11	6.92	8.87

\*) Theoretical lifting capacity



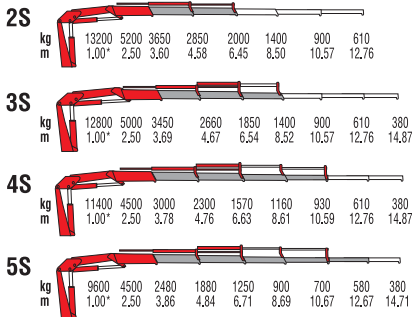
Double linkages, negative angle, working flexibility

MODELS	LIFTING MOMENT	MAX VERTICAL REACH (HYDR)	WORKING PRESSURE	OIL FLOW	SLEWING ANGLE	WEIGHT	DIMENSIONS
	tm	m	bar	l/min	°	kg	WxHxD
2S	9.5	10.3	300	40	425	1390	2305x2110x840
3S	-	12.4	300	40	425	1500	2305x2110x840





FOR NON-CE MARKET ONLY **814C**



\*) Theoretical lifting capacity

MODELS	LIFTING MOMENT	MAX VERTICAL REACH (HYDR)	WORKING PRESSURE	OIL FLOW	SLEWING ANGLE	WEIGHT	DIMENSIONS
	tm	m	bar	l/min	°	kg	mm
2S	13.2	9.9	270	30	380	1745	2460x2340x855
3S	-	11.9	270	30	380	1865	2460x2340x855
4S	-	13.9	270	30	380	1965	2485x2340x855
5S	-	15.9	270	30	380	2055	2500x2340x910



## 914NGC



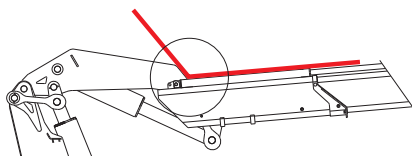
Only with CE or Radio version



Soft Descend Drive

Model	kg	12520	3210	2310	1700	
2S	m	1.00*	3.90	5.30	7.10	
Model	kg	12170	3080	2200	1600	1250
3S	m	1.00*	3.95	5.38	7.20	9.15

\*) Theoretical lifting capacity

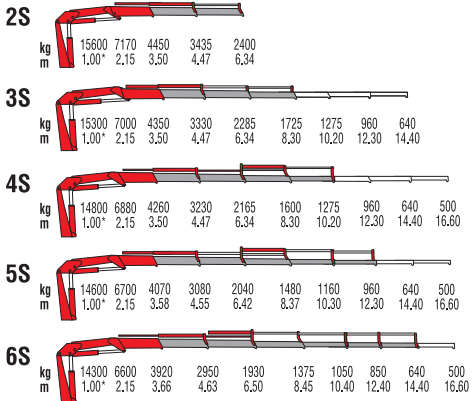


Double linkages, negative angle, working flexibility

MODELS	LIFTING MOMENT	MAX VERTICAL REACH (HYDR)	WORKING PRESSURE	OIL FLOW	SLEWING ANGLE	WEIGHT	DIMENSIONS
	tm	m	bar	l/min	°	kg	WxHxD
2S	12.5	10.9	300	40	425	1735	2455x2330x825
3S	-	12.9	300	40	425	1835	2455x2330x825



FOR NON-CE MARKET ONLY **817C**



\*) Theoretical lifting capacity

MODELS	LIFTING MOMENT	MAX VERTICAL REACH (HYDR)	WORKING PRESSURE	OIL FLOW	SLEWING ANGLE	WEIGHT	DIMENSIONS
	tm	m	bar	l/min	°	kg	WxHxD
							mm
2S	15.6	10.0	310	32	387	2200	2480x2295x970
3S	-	12.0	310	32	387	2320	2480x2295x1000
4S	-	13.9	310	32	387	2440	2480x2295x1000
5S	-	15.9	310	32	387	2550	2480x2295x1000
6S	-	18.0	310	32	387	2630	2480x2295x1000



## 917NGC



Only with CE or Radio version



Soft Descend Drive

Model	kg	4010	1940	2115
2S	15440	4010	1940	2115
m	1.00*	3.85	5.18	7.13

Model	kg	3860	2805	1990	1530
3S	15050	3860	2805	1990	1530
m	1.00*	3.90	5.23	7.18	9.23

\*) Theoretical lifting capacity

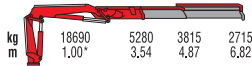
MODELS	LIFTING MOMENT	MAX VERTICAL REACH (HYDR)	WORKING PRESSURE	OIL FLOW	SLEWING ANGLE	WEIGHT	DIMENSIONS
	tm	m	bar	l/min	°	kg	WxHxD
2S	15.4	10.9	300	60	425	1880	2470x2330x825
3S	-	12.9	300	60	425	2005	2470x2330x825



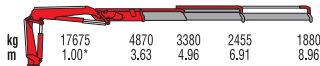
## 921 NGC



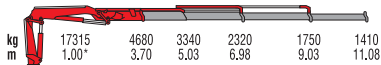
2S



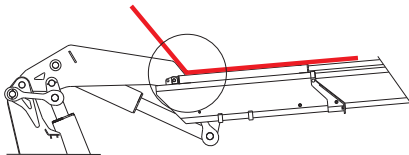
3S



4S



\*) Theoretical lifting capacity

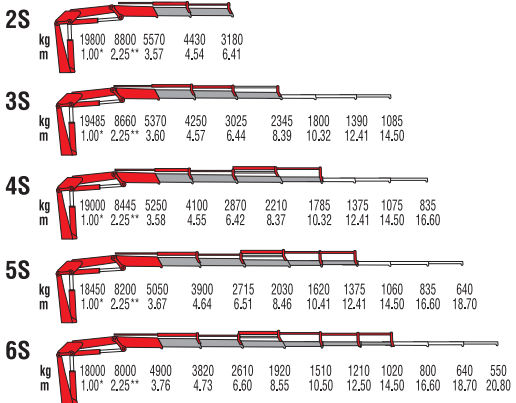


Double linkages, negative angle, working flexibility

MODELS	LIFTING MOMENT	MAX VERTICAL REACH (HYDR)	WORKING PRESSURE	OIL FLOW	SLEWING ANGLE	WEIGHT	DIMENSIONS WxHxD
	tm	m	bar	l/min	°	kg	mm
2S	18.7	10.5	300	70	415	2350	2520x2300x870
3S	-	12.7	300	70	415	2485	2520x2300x870
4S	-	14.8	300	70	415	2605	2520x2300x870



# 924C FOR NON-CE MARKET ONLY



\*) Theoretical lifting capacity

\*\*) Fixed hook capacity

MODELS	LIFTING MOMENT	MAX VERTICAL REACH (HYDR)	WORKING PRESSURE	OIL FLOW	SLEWING ANGLE	WEIGHT	DIMENSIONS
	tm	m	bar	l/min	°	kg	WxHxD
2S	19.8	10.0	325	38	415	2650	2520x2330x1016
3S	-	12.0	325	38	415	2800	2520x2330x1016
4S	-	13.9	325	38	415	2940	2520x2330x1016
5S	-	16.0	325	38	415	3060	2520x2330x1016
6S	-	18.1	325	38	415	3180	2520x2330x1016



# 924NGC



**2S**

kg	22715	6090	4455	3190
m	1.00*	3.72	5.06	7.03

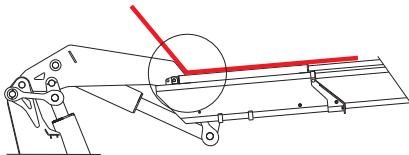
**3S**

kg	21875	5865	4255	3010	2305
m	1.00*	3.73	5.06	7.03	9.10

**4S**

kg	21145	5550	4005	2800	2115	1710
m	1.00*	3.81	5.14	7.11	9.18	11.25

\*) Theoretical lifting capacity



**Double linkages, negative angle, working flexibility**

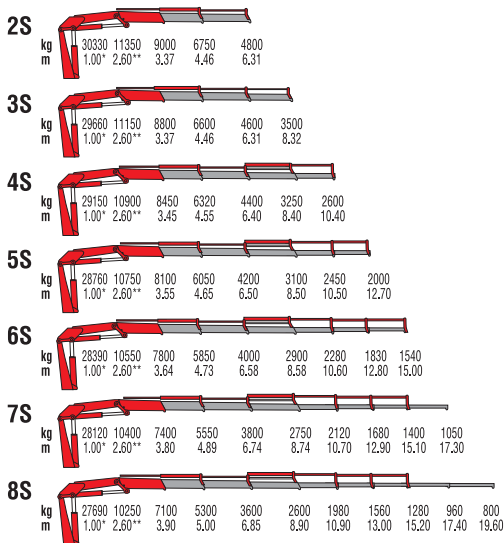
MODELS	LIFTING MOMENT	MAX VERTICAL REACH (HYDR)	WORKING PRESSURE	OIL FLOW	SLEWING ANGLE	WEIGHT	DIMENSIONS
	tm	m	bar	l/min	°	kg	WxHxD
							mm
2S	22.7	10.7	300	80	415	2530	2520x2300x930
3S	-	12.8	300	80	415	2670	2520x2300x930
4S	-	14.9	300	80	415	2810	2520x2300x930



# 933C



Soft Descend Drive



\*) Theoretical lifting capacity    \*\*) Fixed hook capacity

MODELS	LIFTING MOMENT	MAX VERTICAL REACH (HYDR)	WORKING PRESSURE	OIL FLOW	SLEWING ANGLE	WEIGHT	DIMENSIONS
	tm	m	bar	l/min	°	kg	WxHxD
2S	30.3	10.2	300	160	397	3750	2540x2355x1170
3S	-	12.2	300	160	397	3970	2540x2355x1170
4S	-	14.3	300	160	397	4200	2540x2355x1170
5S	-	16.6	300	160	397	4370	2540x2355x1170
6S	-	18.9	300	160	397	4530	2540x2405x1170
7S	-	21.2	300	160	397	4650	2540x2490x1300
8S	-	23.5	300	160	397	4770	2540x2550x1300





# 936C



Model	kg	kg	kg	kg	kg	kg	kg	kg	kg	kg	kg	kg	kg	kg	kg	
2S	31000	11530	9200	6950	4980											
	1.00*	2.60**	3.37	4.46	6.31											
3S	30330	11330	9000	6780	4780	3670										
	1.00*	2.60**	3.37	4.46	6.31	8.32										
4S	29770	11100	8630	6500	4570	3400	2750									
	1.00*	2.60**	3.45	4.55	6.40	8.40	10.40									
5S	29390	10900	8280	6220	4350	3250	2600	2150								
	1.00*	2.60**	3.55	4.65	6.50	8.50	10.50	12.70								
6S	29050	10700	7980	6020	4150	3050	2420	1970	1670							
	1.00*	2.60**	3.64	4.73	6.58	8.58	10.60	12.80	15.00							
7S	28800	10550	7580	5720	3950	2900	2250	1800	1520	1120						
	1.00*	2.60**	3.80	4.89	6.74	8.74	10.70	12.90	15.10	17.30						
8S	28350	10400	7270	5460	3750	2740	2100	1680	1390	1060	880					
	1.00*	2.60**	3.90	5.00	6.85	8.90	10.90	13.00	15.20	17.40	19.60					

\*) Theoretical lifting capacity    \*\*) Fixed hook capacity

MODELS	LIFTING MOMENT	MAX VERTICAL REACH (HYDR)	WORKING PRESSURE	OIL FLOW	SLEWING ANGLE	WEIGHT	DIMENSIONS
	tm	m	bar	l/min	°	kg	WxHxD
							mm
2S	31.0	10.2	310	160	397	3750	2540x2355x1170
3S	-	12.2	310	160	397	3970	2540x2355x1170
4S	-	14.3	310	160	397	4200	2540x2355x1170
5S	-	16.6	310	160	397	4370	2540x2355x1170
6S	-	18.9	310	160	397	4530	2540x2405x1170
7S	-	21.2	310	160	397	4650	2540x2490x1300
8S	-	23.5	310	160	397	4770	2540x2550x1300





# 600T Series

Compact telescopic boom cranes

**601T**

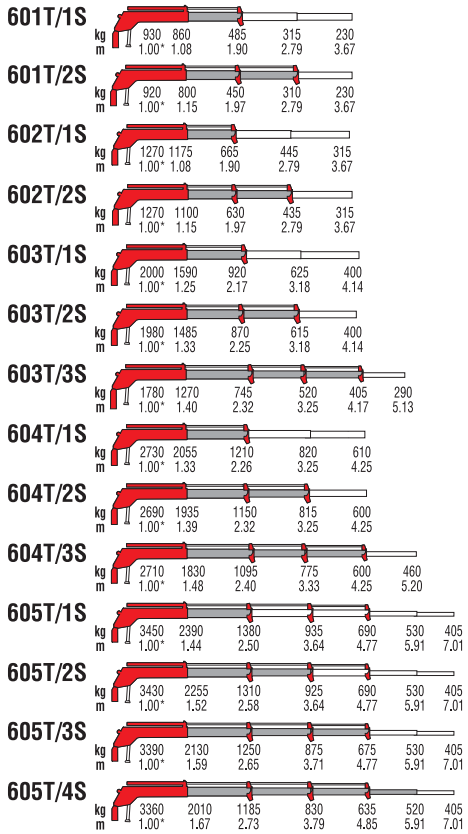
**602T**

**603T**

**604T**

**605T**





\*) Theoretical lifting capacity

MODELS	LIFTING MOMENT	MAX VERTICAL REACH (HYDR)	WORKING PRESSURE	OIL FLOW			SLEWING ANGLE	WEIGHT	DIMENSIONS WxHxD
	tm			m	bar	l/min			
601T/1S	0.93	3.01	180	5	328	145	595x1240x370		
601T/2S	-	3.85	180	5	328	164	650x1240x370		
602T/1S	1.27	2.98	160	8	335	174	620x1245x435		
602T/2S	-	3.80	160	8	335	193	675x1245x435		
603T/1S	1.99	3.56	160	8	335	216	695x1525x435		
603T/2S	-	4.51	160	8	335	240	710x1525x435		
603T/3S	-	5.45	150	8	335	262	870x1525x435		
604T/1S	2.73	3.58	160	10	335	263	730x1590x440		
604T/2S	-	4.49	160	10	335	295	755x1590x440		
604T/3S	-	5.39	160	10	335	321	755x1590x440		
605T/1S	3.45	3.94	175	10	395	301	980x1705x440		
605T/2S	-	4.98	175	10	395	337	1040x1705x440		
605T/3S	-	6.01	175	10	395	370	1040x1705x440		
605T/4S	-	7.04	175	10	395	399	1040x1705x440		





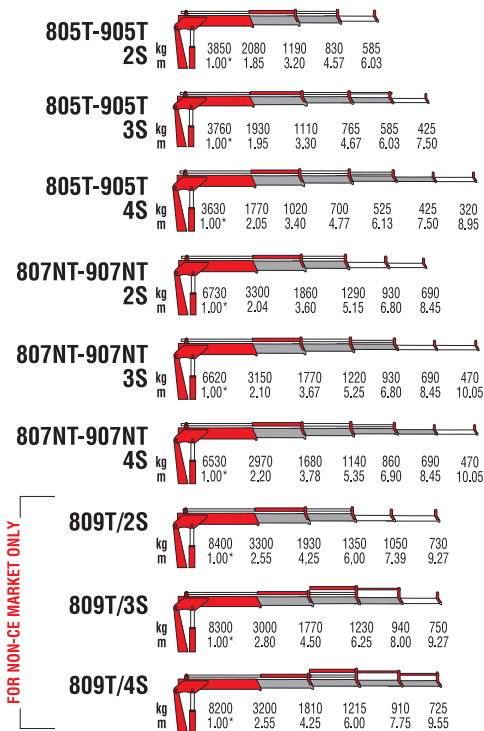
# T Series

Telescopic boom cranes

805T - 905T  
807NT - 907NT  
809T  
810NG T  
811NG T  
811T  
814NG T  
815T  
816T  
817T  
818NG T  
818T  
821NG T  
824NG T







MODELS	LIFTING MOMENT	MAX VERTICAL REACH (HYDR)	WORKING PRESSURE	OIL FLOW	SLEWING ANGLE	WEIGHT	DIMENSIONS
	tm	m	bar	l/min	°	kg	WxHxD mm
805T-905T/2S	3.85	7.30	220	16	380	690	2085x1855x470
805T-905T/3S	-	8.80	220	16	380	735	2085x1855x470
805T-905T/4S	-	10.20	220	16	380	775	2085x1855x470
807NT-907NT/2S	6.73	7.80	260	18	387	880	2300x1995x550
807NT-907NT/3S	-	9.30	260	18	387	940	2300x1995x550
807NT-907NT/4S	-	10.9	260	18	387	1000	2300x1995x550
809T/2S	8.40	9.46	260	20	395	1190	2350x2290x590
809T/3S	-	11.45	260	20	395	1270	2350x2290x590
809T/4S	-	13.00	260	20	395	1335	2350x2290x590



## 810NGT/2S

kg	8770	4060	2150	1445
m	1.00*	2.16	4.07	5.98

## 810NGT/3S

kg	8740	3900	2040	1375	990
m	1.00*	2.24	4.15	6.05	8.00

## 810NGT/4S

kg	8550	3700	1940	1290	945	735
m	1.00*	2.31	4.22	6.13	8.08	10.03

## 811NGT/2S

kg	10250	4745	2515	1705
m	1.00*	2.16	4.07	5.98

## 811NGT/3S

kg	10170	4540	2395	1605	1205
m	1.00*	2.24	4.15	6.05	8.00

## 811NGT/4S

kg	10100	4375	2300	1520	1125	900
m	1.00*	2.31	4.22	6.13	8.08	10.03

FOR NON-CE MARKET ONLY

## 811T/2S

kg	10350	4060	2400	1670	1300	970
m	1.00*	2.55	4.25	6.00	7.39	9.27

## 811T/3S

kg	10200	3650	2200	1540	1190	970
m	1.00*	2.80	4.50	6.25	8.00	9.27

## 811T/4S

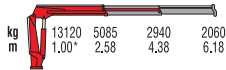
kg	10100	3950	2275	1550	1170	940
m	1.00*	2.55	4.25	6.00	7.75	9.55

\*) Theoretical lifting capacity

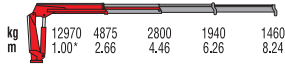
MODELS	LIFTING MOMENT	MAX VERTICAL REACH (HYDR)	WORKING PRESSURE	OIL FLOW	SLEWING ANGLE	WEIGHT	DIMENSIONS
	tm	m	bar	l/min	°	kg	WxHxD mm
810NGT/2S	8.77	9.2	310	40	425	1055	2315x2295x825
810NGT/3S	-	11.1	310	40	425	1150	2315x2295x825
810NGT/4S	-	13.1	310	40	425	1225	2315x2295x825
811NGT/2S	10.2	9.2	300	40	425	1220	2310x2320x830
811NGT/3S	-	11.2	300	40	425	1325	2310x2320x830
811NGT/4S	-	13.1	300	40	425	1410	2310x2320x830
811T/2S	10.3	6.00	1670	20	395	1190	2350x2290x590
811T/3S	-	8.00	1190	20	395	1270	2350x2290x590
811T/4S	-	9.55	940	20	395	1335	2350x2290x590



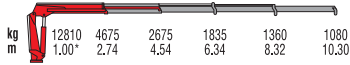
## 814NGT/2S



## 814NGT/3S

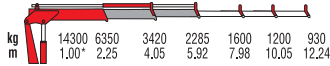


## 814NGT/4S

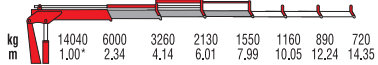


FOR NON-CE MARKET ONLY

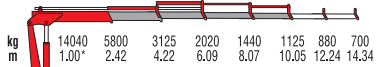
## 815T/2S



## 815T/3S

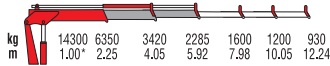


## 815T/4S

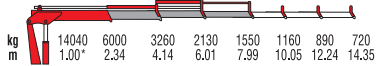


FOR NON-CE MARKET ONLY

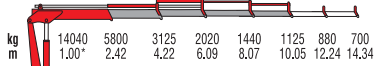
## 816T/2S



## 816T/3S



## 816T/4S



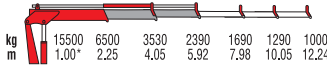
\*) Theoretical lifting capacity

MODELS	LIFTING MOMENT	MAX VERTICAL REACH (HYDR)	WORKING PRESSURE	OIL FLOW	SLEWING ANGLE	WEIGHT	DIMENSIONS
	tm	m	bar	l/min	°	kg	WxHxD mm
814NGT/2S	13.1	9.80	285	60	425	1285	2475x2300x830
814NGT/3S	-	11.8	285	60	425	1385	2475x2300x830
814NGT/4S	-	13.8	285	60	425	1480	2475x2300x830
815T/2S	14.3	9.26	270	30	380	1560	2480x2490x780
815T/3S	-	11.2	270	30	380	1690	2480x2490x780
815T/4S	-	13.1	270	30	380	1800	2500x2490x780
816T/2S	14.3	9.01	280	30	380	1560	2480x2490x780
816T/3S	-	12.3	280	30	380	1690	2480x2490x780
816T/4S	-	15.8	280	30	380	1800	2500x2490x780

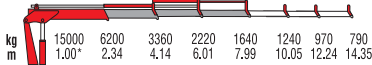


FOR NON-CE MARKET ONLY

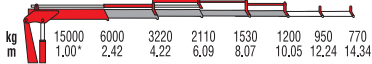
## 817T/2S



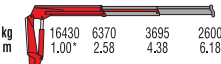
## 817T/3S



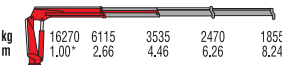
## 817T/4S



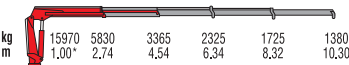
## 818NGT/2S



## 818NGT/3S

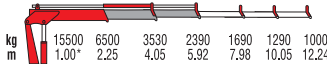


## 818NGT/4S

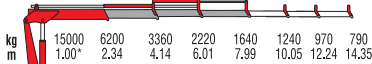


FOR NON-CE MARKET ONLY

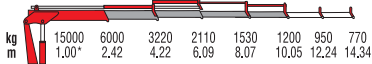
## 818T/2S



## 818T/3S



## 818T/4S



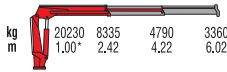
\*) Theoretical lifting capacity

MODELS	LIFTING MOMENT	MAX VERTICAL REACH (HYDR)	WORKING PRESSURE	OIL FLOW	SLEWING ANGLE	WEIGHT	DIMENSIONS
	tm	m	bar	l/min	°	kg	WxHxD
							mm
817T/2S	15.5	9.26	290	30	380	1610	2480x2490x780
817T/3S	-	11.2	290	30	380	1740	2480x2490x780
817T/4S	-	13.1	290	30	380	1850	2500x2490x780
818NGT/2S	16.5	9.8	290	60	425	1620	2300x2485x840
818NGT/3S	-	11.8	290	60	425	1735	2300x2485x840
818NGT/4S	-	13.8	290	60	425	1825	2300x2485x840
818T/2S	15.5	9.01	290	30	380	1610	2480x2490x780
818T/3S	-	12.3	290	30	380	1740	2480x2490x780
818T/4S	-	15.8	290	30	380	1850	2500x2490x780

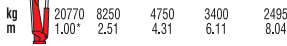




## 821NGT/2S



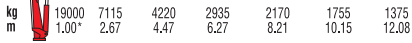
## 821NGT/3S



## 821NGT/4S



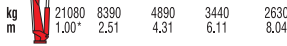
## 821NGT/5S



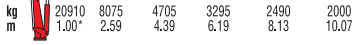
## 824NGT/2S



## 824NGT/3S



## 824NGT/4S



## 824NGT/5S

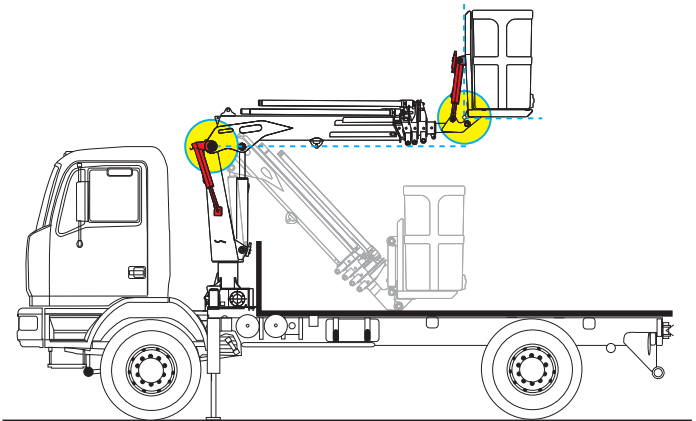


\*) Theoretical lifting capacity

MODELS	LIFTING MOMENT	MAX VERTICAL REACH (HYDR)	WORKING PRESSURE	OIL FLOW	SLEWING ANGLE	WEIGHT	DIMENSIONS
	tm	m	bar	l/min	°	kg	mm
821NGT/2S	20.2	9.7	315	70	415	1945	2510x2400x870
821NGT/3S	-	11.7	315	70	415	2090	2510x2400x870
821NGT/4S	-	13.7	315	70	415	2210	2540x2400x870
821NGT/5S	-	15.7	300	70	415	2305	2540x2400x870
824NGT/2S	20.5	9.7	335	70	415	1945	2520x2400x870
824NGT/3S	-	11.7	335	70	415	2090	2520x2400x870
824NGT/4S	-	13.7	335	70	415	2210	2540x2400x870
824NGT/5S	-	15.7	320	70	415	2305	2540x2400x870



Thanks to the special "self-aligning" balancing system, the position of the basket is always horizontal without any intervention from the user.





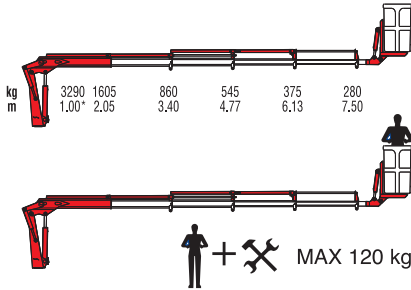
# **AERO Series**

Aerial basket cranes

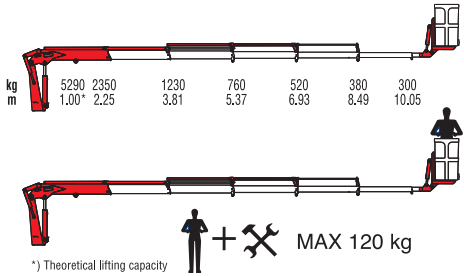
**805T - 905T  
807NT - 907NT**



### 805T - 905T



### 807NT - 907NT



MODELS	LIFTING MOMENT	MAX VERTICAL REACH (HYDR)	WORKING PRESSURE	OIL FLOW	SLEWING ANGLE	WEIGHT	DIMENSIONS WxHxD
	tm	m	bar	l/min	°	kg	mm
805T-905T	3.3	13.30	220	15	380	940	3305x1940x850
807NT-907NT	5.3	16.00	220	18	387	1260	3765x2080x850





# **PALM Series**

Specialized cranes for agricultural tractors

**801N  
802N**

## Easy and Safe



### Easy to use and maintain

All the greasing points are in an easy to access position.



### Cable controls

Connection by cable controls allow an easy installation and a higher safety for the driver.

## 4 functions control valve by Walvoil



## Strong and reliable

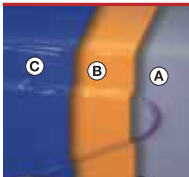


### Structural design in accordance with: EN12999



### Quality ISO9001: 2008 certified

Production from the raw metal to the crane ready to be installed is controlled by quality procedures certified by Lloyd's register according to ISO9001.



### Long life painting

Painting process is made to allow the best quality possible and ensure a long crane life in all the applications and environments.

- A - Iron grid sandblasting
- B - Cathodic electrodeposition paint
- C - Blue polyester powder paint



### Hexagonal boom

The use of this technology brings superior performance, reduced maintenance, and less adjustment.



## Strong and reliable

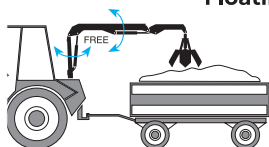
Rack and Pinion heavy duty slewing



Internal extension cylinder



Floating device



## Full packages



**3 jaws grab**

Self weight: 35 kg

Capacity: 50 dm<sup>3</sup>



**4 jaws grab**

Self weight: 75 kg

Capacity: 100 dm<sup>3</sup>



**Oil tank**

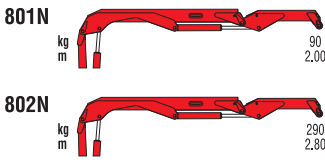
Steel oil tank made to be installed on the back of the tractor including oil filter and level indicators.

# PALM Series





# PALM Series



MODELS	LIFTING MOMENT	MAX VERTICAL REACH (HYDR)	WORKING PRESSURE	OIL FLOW	SLEWING ANGLE	WEIGHT WITHOUT MANUAL EXTENSION	RECOMMENDED TRACTOR
	tm	m	bar	l/min	°	kg	hp
801N	0.5	3.7	90	12	330	25	25 - 65
802N	1.0	3.7	160	12	330	46	25 - 65



# **NG** **New Generation**

# **Features & Accessories**



Double linkage



# New Generation

**New crane line sets new standards in design, performances, reliability and safety for truck mounted cranes.**

A new control station, incorporating both crane and stabiliser controls, has an ergonomic working position and user-friendly interface which delivers better operator efficiency and safety together with improved productivity.

Dynamic Load Diagram allows advance verification of the crane lifting capacity based on the truck stability, and, Magic Touch allows automatic folding and unfolding to transport and working positions.

There are several options for radio remote control and a wide range of stabiliser configurations to ensure safe positioning of the truck in all ground conditions.



## 1 **Sprint Generation System 2° Generation**

Fast, precise, safe

## 2 **Link on second boom**

Efficiency in confined spaces thanks to the negative angle

## 3 **Link on column**

Constant lifting capacity on all main boom positions

## 4 **Ergonomic control station and user-friendly interface**

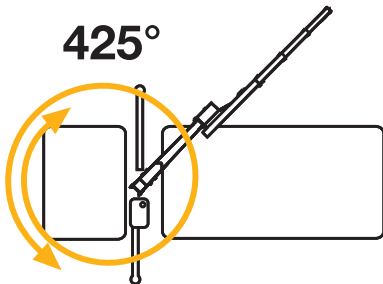
Comfort, easy to use and safe

## 5 **Always stable**

More than 40 stabilizer combinations available

## 6 **425° Slewing angle**

The widest slewing angle for medium sized cranes





## High adaptation with negative angle

Negative angle between first/second boom produces the most versatile crane structure available. The result is working flexibility - easier access to confined and low ceiling spaces.

## Constant capacity in all positions

The double linkage joins the articulation cylinder to the boom. Its design raises the mechanical advantage of the articulation, to provide consistent force through all working angles.







TOP 7" colour display

## New control station

The most ergonomic working position and user-friendly interface



### 7" color display

Simple and quick access to all the functions and information.

### Crane controls

Low and horizontal position of ergonomic levers for comfortable crane control.

### Vertical stabilizers levers

Safe and fast.

Excellent supervision of stabilizing operation.





## Magic Touch



- Easy to start and close
- Save time, increase productivity and safety

### Crane Automatic folding/unfolding.

System allows driver to open the crane from fold position to working position and back to transporting position by the pressure of a single lever on radio transmitter (or a button on the display).



## Dynamic Load Diagram



- Improve the efficiency loading/unloading cycle
- Easy to use and safety optimised

**Crane lifting capacity always under control in all stabilizer positions.**

After the stabilization, operator can select the load to be lifted. Display shows the permitted crane outreach based on the stability and the load selected.

# A WIDE CRANE RANGE

1 tm

10 tm

Rack and pinion articulated cranes

**800 - 900**

**Series:**

from 3 to 50 tm class

Slewing bearing articulated cranes

**VR**

**Series:**

from 23 to 85 tm class

3T Articulated cranes

**100**

**Series:**

from 3 to 20 tm class

Compact boom articulated cranes

**C**

**Series:**

from 9 to 30 tm class

Compact Telescopic cranes

**600T**

**Series:**

from 1 to 4 tm class

Telescopic boom cranes

**T**

**Series:**

from 1 to 24 tm class

Aerial basket cranes

**AERO**

**Series:**

from 3 to 6 tm class

Cranes for Agricultural Tractors

**PALM**

**Series:**

from 0.5 to 1 tm class

20 tm

30 tm

40 tm

50 tm

85 tm





# Single hand proportional system

Single-handed control of every  
crane function

Proportional speed control  
of any single movement

Stabilizer control by radio



Function selection



Proportional speed  
control



*Compact dimensions  
and reduced weight*

# Radio remote controls

The operator can control the crane with high precision proportional levers in every position and, doing so, can supervise the loading and unloading operations.

That means a great time saving and higher safety. The operator can also control the truck engine start, stop and accelerator with the remote control.

All AMCO VEBA remote controls have an identification code and are shielded from electro-magnetic fields and from external radio signals.



**Hetriconic "Single Hand"**



**Scanreco**



**Hetriconic (Not CE)**



**Hetriconic CE Basic (Not CE)**

Only the model 950 is standard equipped with CANBUS radio remote control on both CE and NO CE versions.



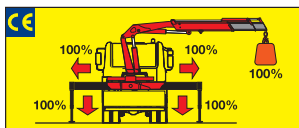
**Hetriconic CE Graphic**



**4" TFT HD-color display to keep the crane always under control**

# Stability control systems (CE)

## S System

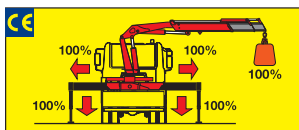


The **S System** integrated in the load limiting device checks the stabilizers' positions. Only when all beams are fully open and all stabilizers are on the ground the crane can operate and lift loads.



Control display

## M System

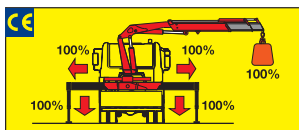


The **M System** integrated in the load limiting device checks the stabilizers' positions. Only when all beams are fully open and all stabilizers are on the ground the crane can operate and lift loads.



Control display

## ML System



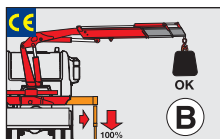
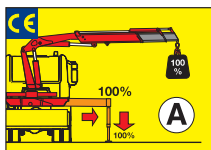
The **ML System** integrated in the load limiting device checks the stabilizers' positions. Only when all beams are fully open and all stabilizers are on the ground the crane can operate and lift loads.



Control display



## L System



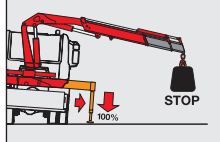
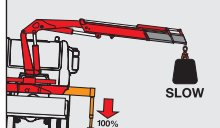
The **L system** checks the stabilizers' positions and the truck's inclination.

According to the beams' positions, the system allows two operating modes:

**Mode A** - all beams fully open and all stabilizers feet on the ground.  
**Mode B** - stabilizers on the ground only.

**In mode A:** the load limiting device stops the crane when the crane reaches 100% of the nominal capacity.

**In mode B:** a dedicated sensor monitors the truck's inclination. The load limiting device stops the crane before it reaches an inclination angle dangerous for stability, or when the crane reaches its nominal capacity.



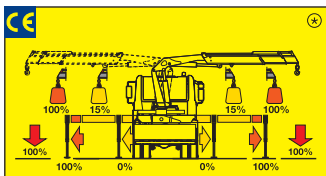
Control display



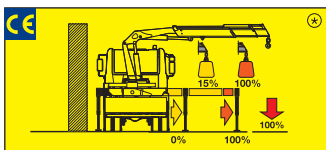
# Stability control systems (CE)



## XL System



The **EBB** monitors for 2 possible beams' positions: fully open and not fully open. Depending on the position of the beams and the stabilizers, the crane's lifting capacity changes according to the setting made by the installer. The crane can be used even with a beam partially or fully retracted without having stability problems.

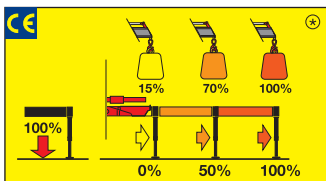


## Optional RCS

The **Rotation Control Sensor** constantly checks the slewing position of the crane and limits the lifting capacity depending on the beams' and the stabilizers' positions.



## 2XL System



The **EBB** checks the positions of the stabilizers and divides the working area into 4 slewing sectors: over the cabin, right side, left side and the rear of the vehicle. Depending on the position of the beams and the stabilizers, the crane's lifting capacity changes according to the settings made by the installer. The crane can be used even with a beam partially or fully retracted without having stability problems.



The **PES** (Proportional Encoder Sensor) recognizes 3 positions of the stabilizer's beams: fully open, half extended, fully closed.



The **RCS** (Rotation Control Sensor) recognizes 4 slewing sectors.

The **CAN-BUS** radio-control allows the operator to know the positions of the stabilizers and the loading conditions of the crane.



With manual opening stabilizers, the **2XL System** only recognizes completely open or completely closed beam positions.

⊕ The percentages present in the pictures are merely examples and they have no bearing on the crane's real lifting capacities. The crane's real lifting capacities will depend on truck's stability.

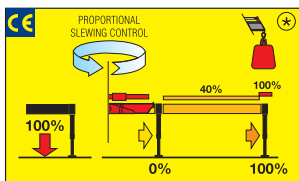
# Stability control systems (CE)

## 3XL

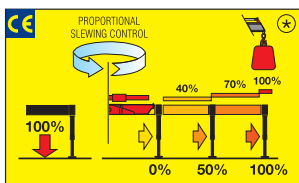


With a 3" TFT display and ergonomic keyboards, the operator can supervise the crane working and select the best parameters for effective use.

The 3XL system controls proportional slewing and the crane's stability, with 2-steps (3XL<sub>2</sub>) or 3-steps (3XL<sub>3</sub>) stabilizers outreach monitoring, depending by crane model and configuration.



## 3XL<sub>2</sub>



## 3XL<sub>3</sub>

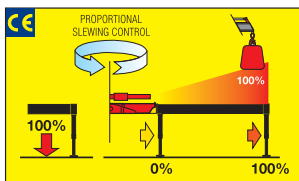
\* The percentages present in the pictures are merely examples and they have no bearing on the cranes' real lifting capacities. The cranes' real lifting capacities will depend on truck's stability.

## 4XL+TOP



A 7" color display with integrated keyboard gives the operator a higher level of awareness of the crane operation and allows selection of the best parameters for effective use.

The system detects the exact position of the beams and proportionally calculates the stability.



# Stability control systems (CE)

delivered standard with the crane



Models	NO RRS					RRS				
	S	M	XL	2XL	3XL	ML	L	2XL	3XL	4XL
803N-903N										
804-904										
805-905		■				■	OPTIONAL			
806N-906N			■			■	OPTIONAL			
807N-907N			■			■	OPTIONAL			
808N-908N			■					■		
■ 809NG					■				■	OPTIONAL
■ 909NG					■				■	OPTIONAL
810										
■ 910NG					■				■	OPTIONAL
■ 811NG					■				■	OPTIONAL
911										
■ 911NG					■				■	OPTIONAL
812										
■ 912NG					■				■	OPTIONAL
■ 813NG					■				■	OPTIONAL
■ 914NG					■				■	OPTIONAL
815										
■ 915NG					■				■	OPTIONAL
817										
■ 817NG					■				■	OPTIONAL
■ 917NG					■				■	OPTIONAL
■ 918NG					■				■	OPTIONAL
820										
■ 821NG					■				■	OPTIONAL
■ 921NG					■				■	OPTIONAL
■ 922NG					■				■	OPTIONAL
823										
■ 824NG					■				■	OPTIONAL
924										
■ 924NG					■				■	OPTIONAL
825			■					■		
■ 925NG					■				■	OPTIONAL
828			■					■		
929				■				■		
933				■				■		
936				■				■		
946 BASIC										
946								■		
950								■		
■ VR23NG									■	OPTIONAL
■ VR26NG									■	OPTIONAL
■ VR60NG										■
■ VR66NG										■
VR75										
VR85								■		

■ New Generation





# EBB

## Electronic Black Box



AMCO VEBA has designed this control motherboard to ensure an effective and reliable control of the crane in every working condition.

The operator can read on the display all informations about the state of the crane, of the accessories and of the routine maintenance.

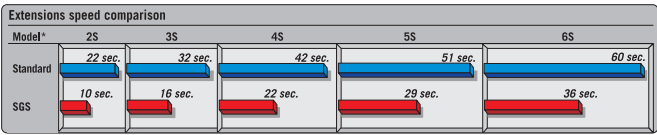
All components are designed according to automotive industry stds. and ensure the highest reliability.

# SGS

## Sprint Generation System



The purpose of SGS system is to increase the extensions speed without affecting the crane safety.



\*1 model of reference: S20

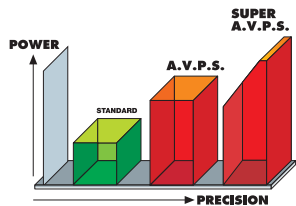
# AVPS

## Amco Veba Power System



AVPS system can reach longer outreach with very heavy load, with the highest precision.

**SUPER AVPS** increase the capacity up to 15% by a proportional speed reduction when the crane is near to the maximum lifting capacity.



# SDD

## Soft Descend Drive



The SDD system is designed to reduce the oscillations and ensure a perfect control of the motions.

Data, descriptions, and illustrations pertain only and uniquely to models sold at the time of printing of this brochure. After the date of printing, this information is purely indicative and not binding upon Amco Veba. Future modifications are solely at the discretion of Amco Veba and are always in compliance with applicable and pertinent safety standards. To obtain updated data, descriptions, and illustrations, contact the manufacturer or your reseller. Cranes manufactured and/or marketed by Amco Veba.



# AMCO / VEBA

LIFTING BEYOND HORIZONS

DEALER



Via Einstein, 4  
42028 Poviglio (RE) Italy  
Tel. +39 0522 40.80.11  
Fax +39 0522 40.80.80  
info@amcoveba.it  
commerciale@amcoveba.it  
www.amcoveba.com

